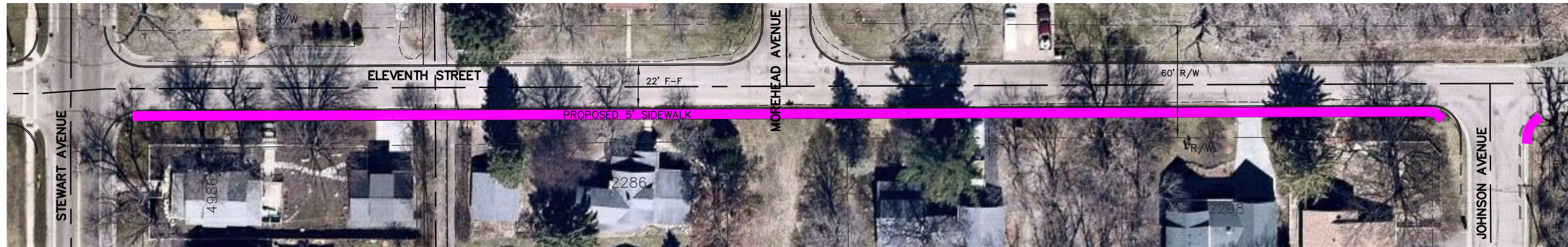
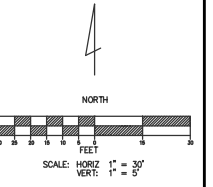
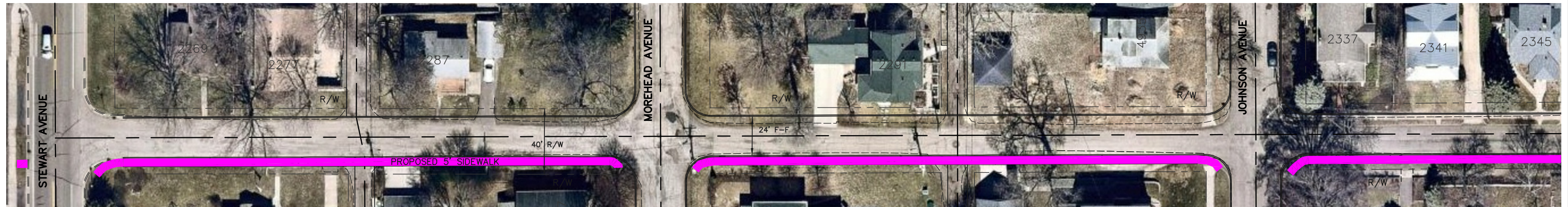


# ELEVENTH STREET



# NINTH STREET



**ELEVENTH STREET**  
STEWART AVENUE TO JOHNSON AVENUE  
22' FACE TO FACE

**NINTH STREET**  
STEWART AVENUE TO LAKE AVENUE NORTH  
24' FACE TO FACE

|                     |                      |                      |                     |
|---------------------|----------------------|----------------------|---------------------|
| 40' - 60' R.O.W.    |                      |                      |                     |
| BOULEVARD<br>varies | DRIVING<br>11' - 12' | DRIVING<br>11' - 12' | BOULEVARD<br>varies |
| 22' - 24' F-F       |                      | 5'<br>SIDEWALK       |                     |
| 2.50% SLOPE         |                      | 2.50% SLOPE          |                     |

CITY OF WHITE BEAR LAKE  
ENGINEERING DEPARTMENT  
4701 HIGHWAY 61  
WHITE BEAR LAKE  
MINNESOTA 55110-3227

**NINTH AND ELEVENTH STREET**  
STREET RECONSTRUCTION &  
UTILITY REHABILITATION  
CITY PROJECT #18-01

PROJECT MAP  
CITY PROJECT NO. 18-01



PROPOSED SIDEWALK