

# CITY OF WHITE BEAR LAKE



## **2020 MILL & OVERLAY PROJECTS**

**CITY PROJECT NO.  
20-06 & 20-13**

**PUBLIC INFORMATIONAL  
MEETING  
DECEMBER 3, 2019**



# ENGINEERING DEPARTMENT



Paul Kauppi	City Engineer/Public Works Director
Nate Christensen	Civil Engineer
Dan Holzemer	Senior Engineering Technician
Jayson Stejskal	Engineering Technician III
Carisa Vermeersch	Engineering Secretary
Connie Taillon	Environmental Specialist



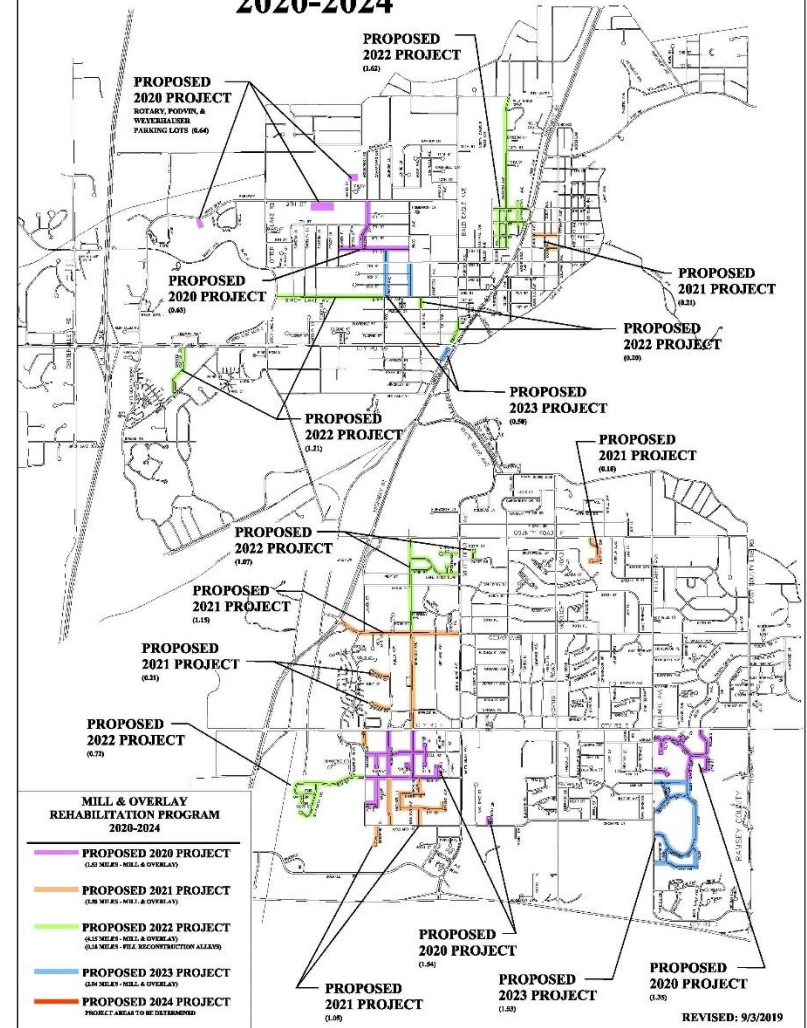


# REHABILITATION PROGRAM OVERVIEW

- MILES VARIES EACH YEAR
- 16% COMPLETED CITYWIDE (SINCE 2011)

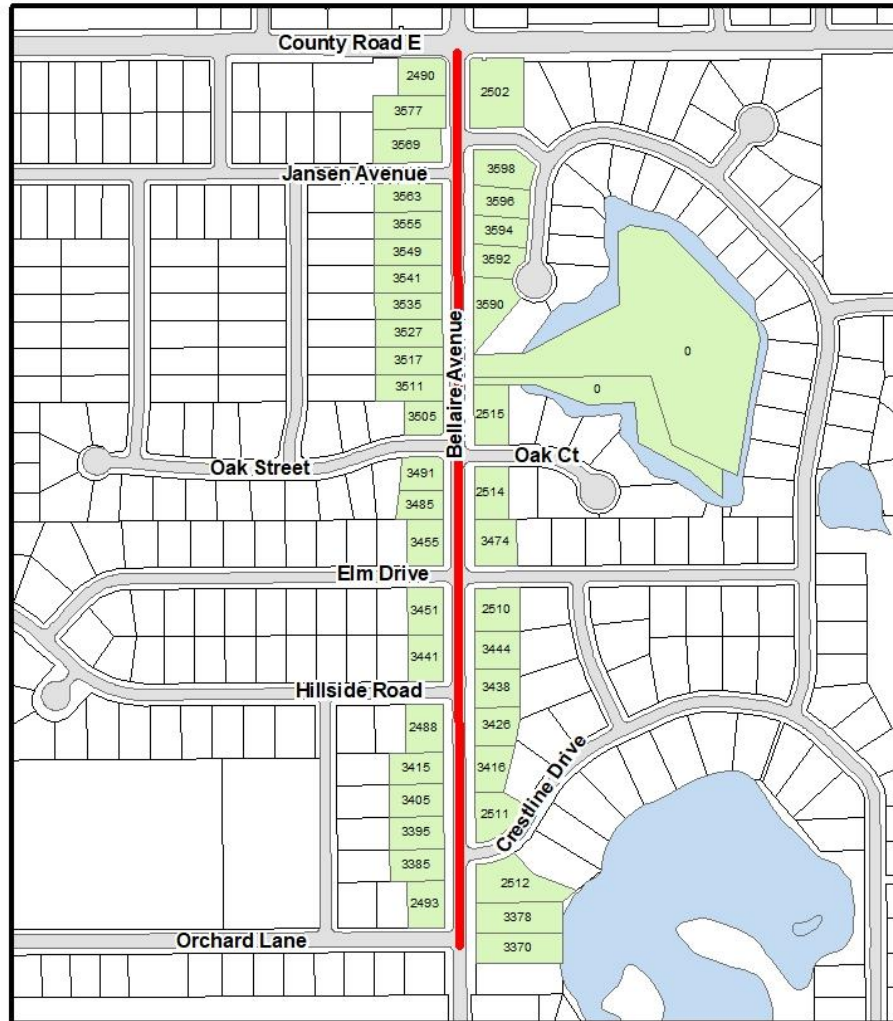


## CITY OF WHITE BEAR LAKE PROPOSED MILL & OVERLAY REHABILITATION PROGRAM 2020-2024





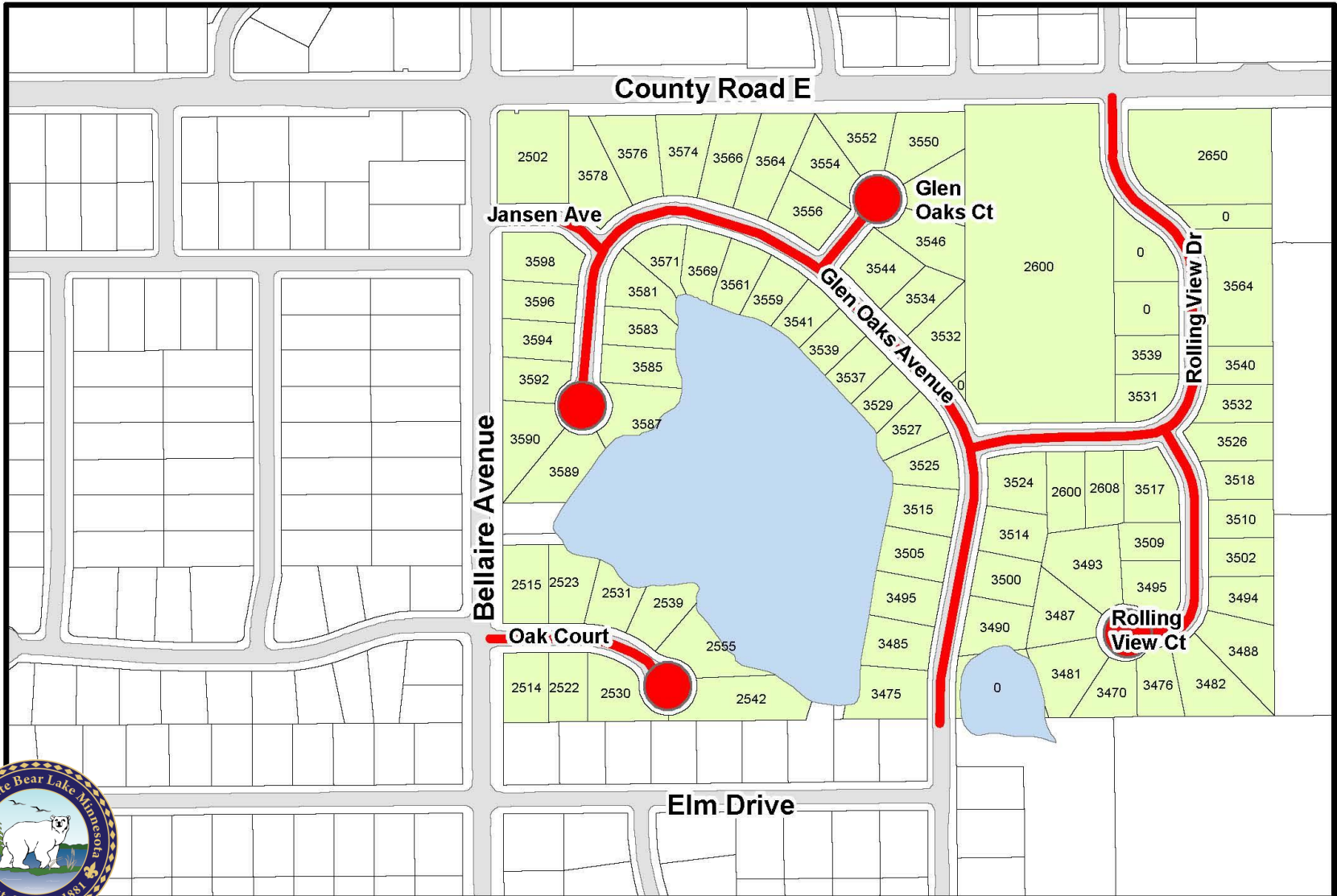
# 2020 Street Reconstruction Project 20-06



 Partial Reconstruction



# 2020 Mill & Overlay Project 20-13



 Mill & Overlay



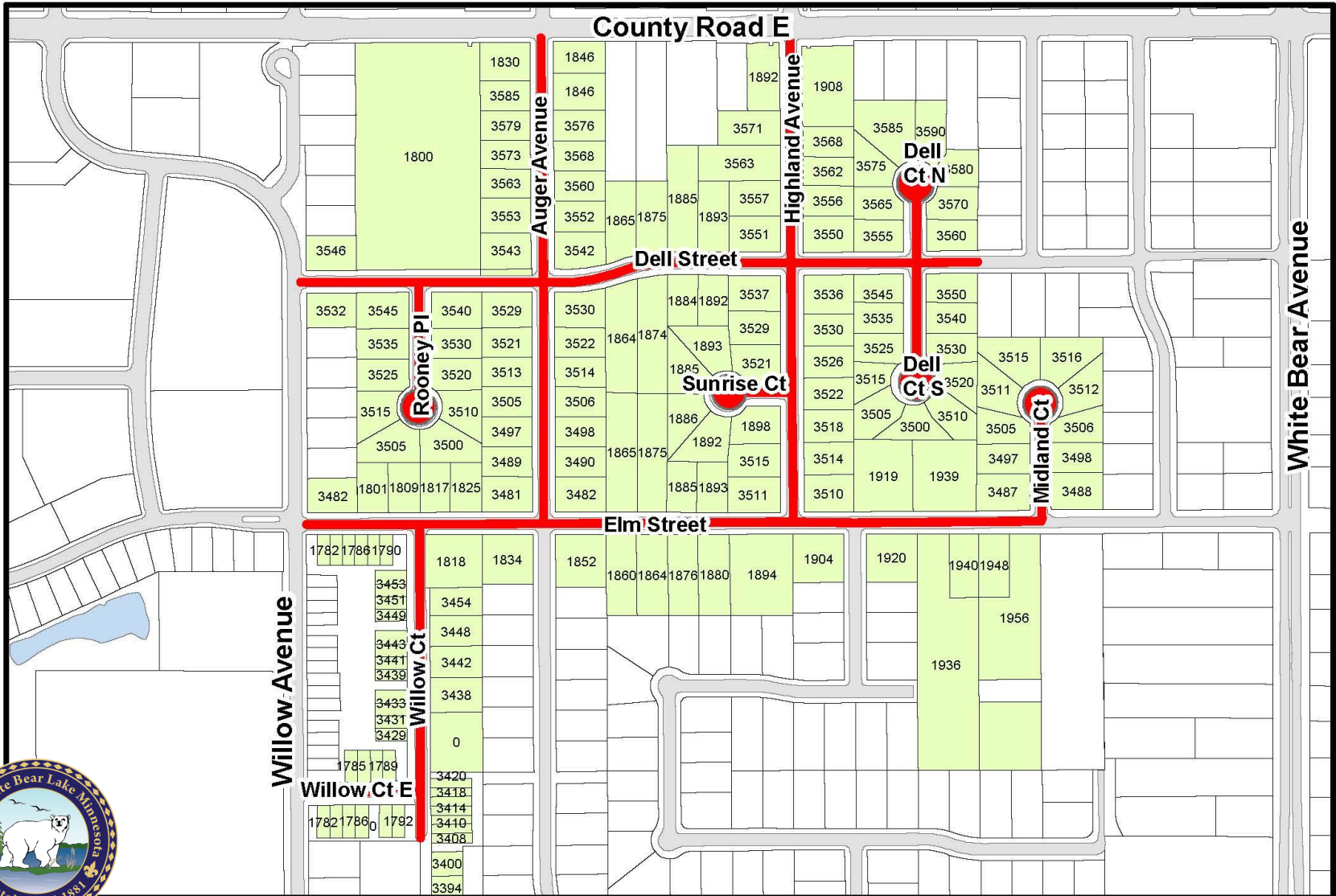
# 2020 Mill & Overlay Project 20-13



 Mill & Overlay



# 2020 Mill & Overlay Project 20-13



 Mill & Overlay



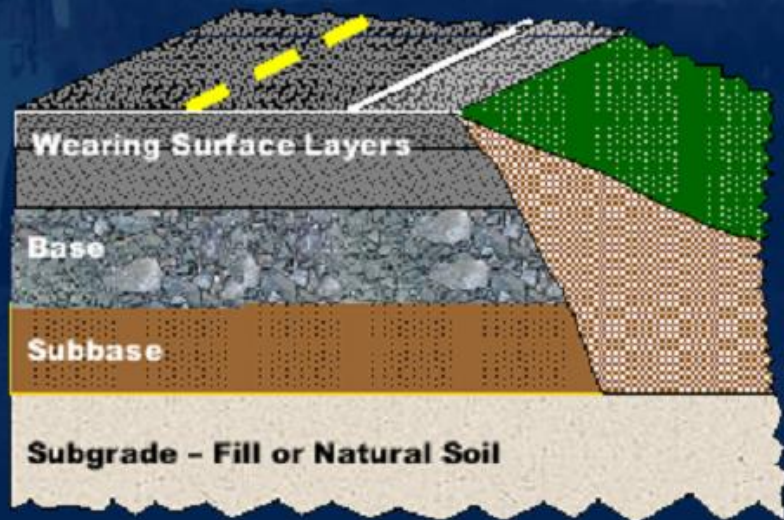
# 2020 Mill & Overlay Project 20-13



 Mill & Overlay



- Pavement or Pavement Structure
  - Wearing surface layers
  - Base
  - Subbase
  - Subgrade



LRRB Pavement Rehabilitation Selection





# Causes of Pavement Deterioration

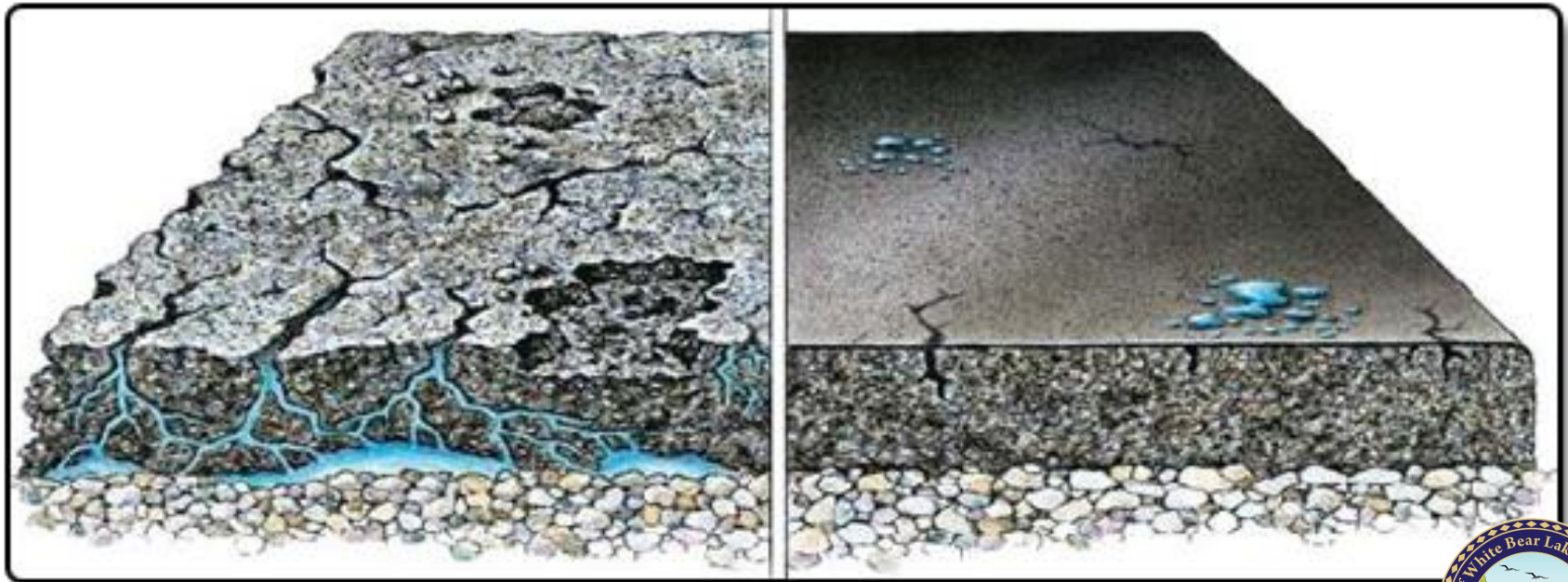
- TRAFFIC VOLUME
- VEHICLE WEIGHT
- POOR DRAINAGE
- TEMPORARY CONDITIONS
- ENVIRONMENTAL DAMAGE

2017. 1

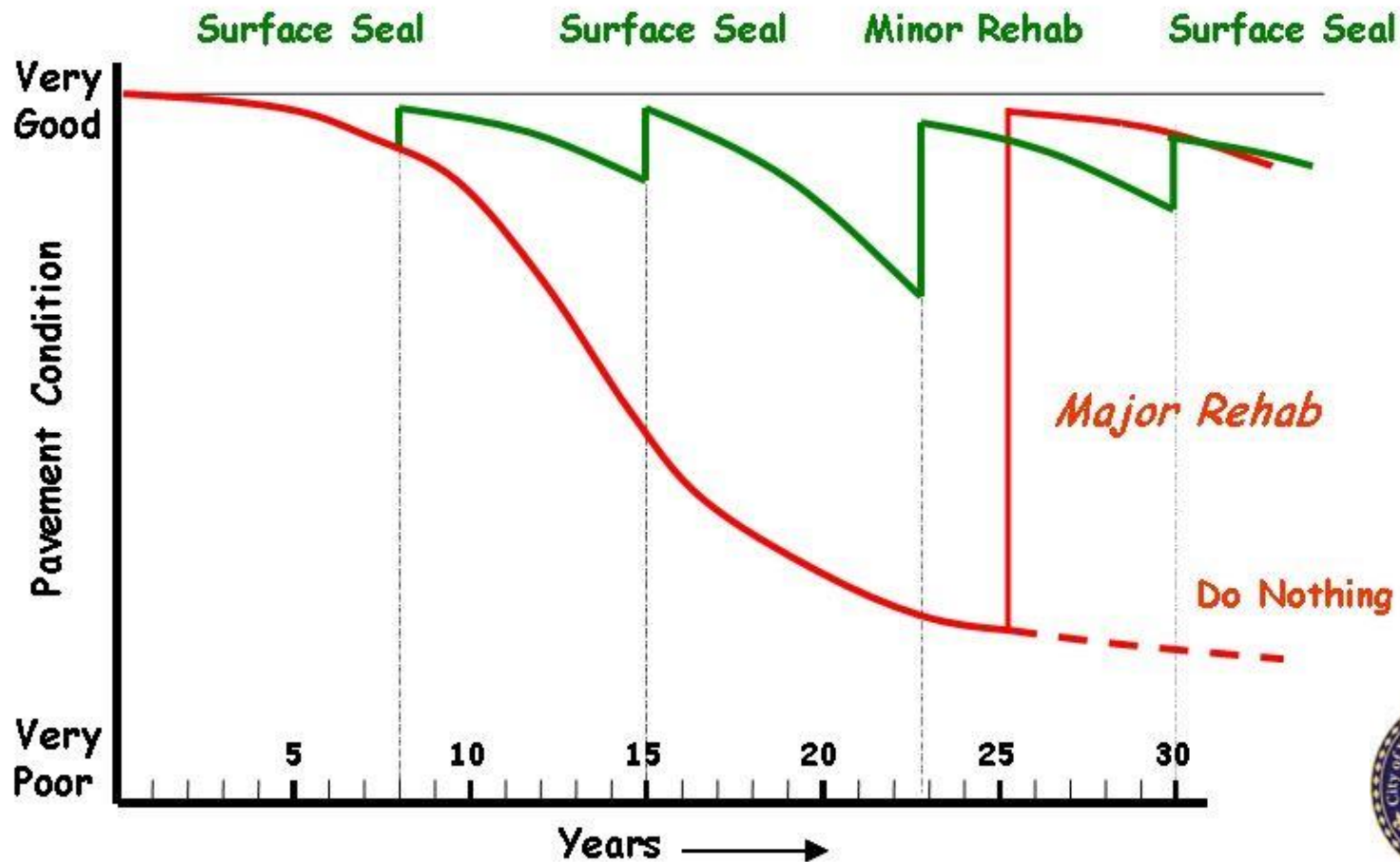


Before

After



*Pavement Management with  
"Good Roads Cost Less"  
Preservation Strategies*





# Pavement Preservation: CRACK SEALING



# Pavement Preservation: Aggregate Seal Coating







Wood Avenue

2017. 9. 20







## Driveway Replacement Program (Bellaire Avenue only)

Residents can choose to have their driveway replaced during the street reconstruction.

Brochures are available with additional information.





## Driveway Replacement Program (Bellaire Avenue only)

Once we hire a contractor, usually in early Spring, the City will send additional information including prices.







## Sanitary Sewer Wye Replacement Program (Bellaire Avenue only)





# PROJECT FUNDING



- ASSESSMENTS
- CITY  
CONSTRUCTION  
FUNDS
- MUNICIPAL  
STATE AID



# ASSESSMENT POLICY



- UNIFORM, FAIR, AND BENEFIT THE PROPERTY
- APPRAISAL REPORT
- FOLLOW STATE STATUTE 429







Xcel Energy will install new gas mains in some construction areas. They will contact you directly regarding this work.

If you have any specific questions or concerns, please contact Xcel Energy.



# Private Utility Work





# MILL & OVERLAY



## CURB REPAIRS



# MILL & OVERLAY



## Install Curb and Gutter (Bellaire Avenue)

One or two days prior to pouring the curb, crews will mark your driveway openings with small white stakes. These stakes indicate the proposed extents of the curb opening (lowest “drive-able” portion of the curb).





# MILL & OVERLAY



Three-Foot sloped "wing"



## Install Curb and Gutter (Bellaire Avenue)

All driveways will also include a three-foot wing on each side which slopes up to match the full height of the curb.



# MILL & OVERLAY





# MILL & OVERLAY



# MILL & OVERLAY

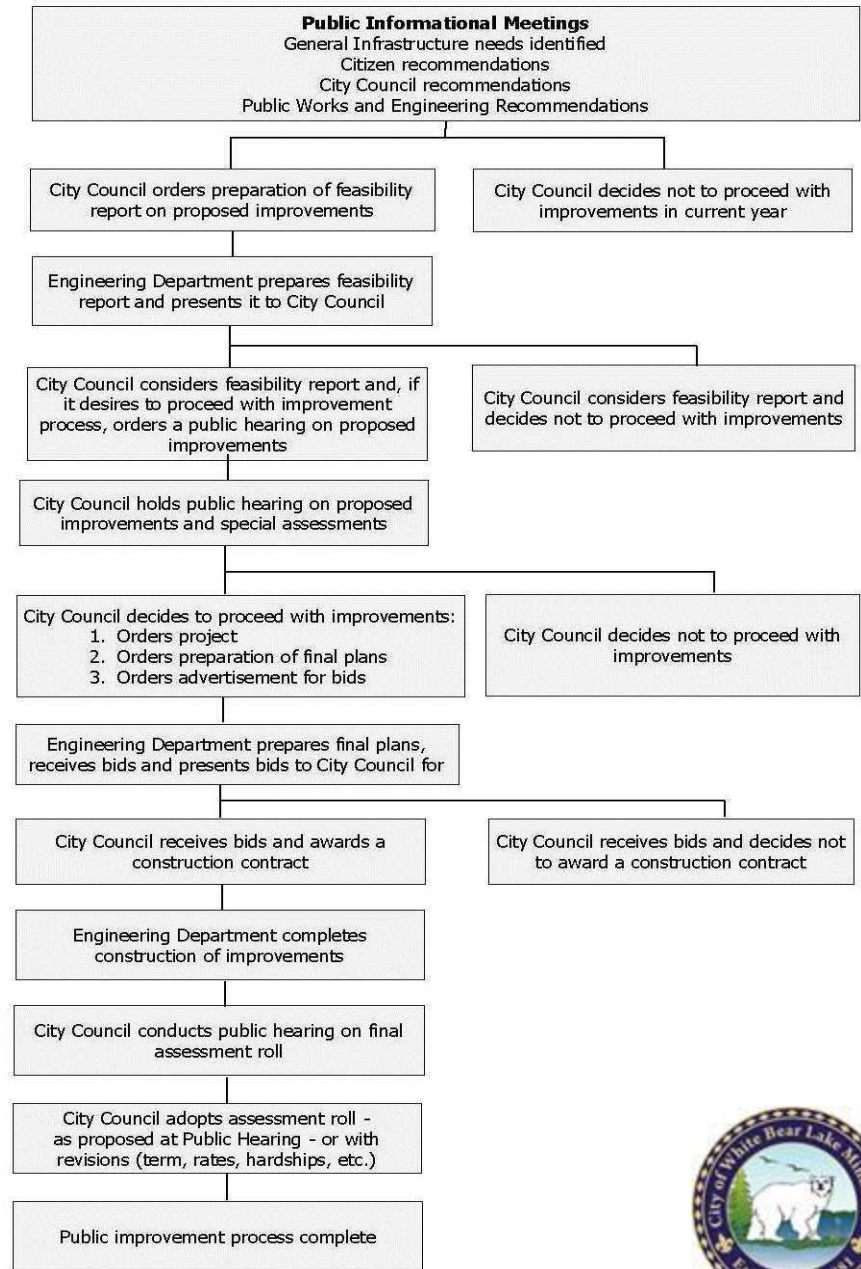




# Public Improvement Process

## ANTICIPATED SCHEDULE

- FEASIBILITY REPORT TO CITY COUNCIL ON FEB 11, 2020
- PUBLIC HEARING NOTICE TO PROPERTY OWNERS ON FEBRUARY 28, 2020
- PUBLIC HEARING ON MARCH 10, 2020
- CONSTRUCTION APPROXIMATELY MAY-OCTOBER 2020



*City of White Bear Lake*



## Raingardens & Street Renovation

A partnership with the City of White Bear Lake,  
residents, and Ramsey-Washington Metro  
Watershed District



# Raingardens and Street Renovation

- Convenient and cost effective time to install a curb cut raingarden
- Local expertise and financial resources available





# What is a Raingarden?

A garden with a small depression that captures rainwater runoff from roofs, driveways, and streets during storms and briefly holds the water until it is absorbed by the soil.



2018 Project: 8<sup>th</sup> & Johnson



# Why are Raingardens important?

Stormwater runoff picks up sediment, road salt, oil, gas, leaves, fertilizers, pesticides, and trash from impervious surfaces and lawns and are washed into storm sewers and ultimately to lakes, wetlands and streams.

By capturing and soaking stormwater runoff into the ground, raingardens prevent polluted stormwater from entering the storm sewer system.

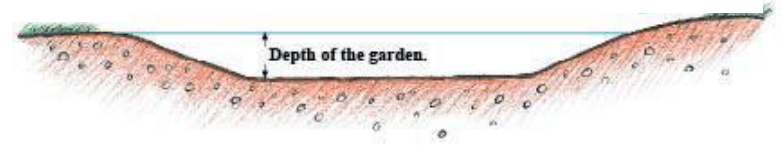




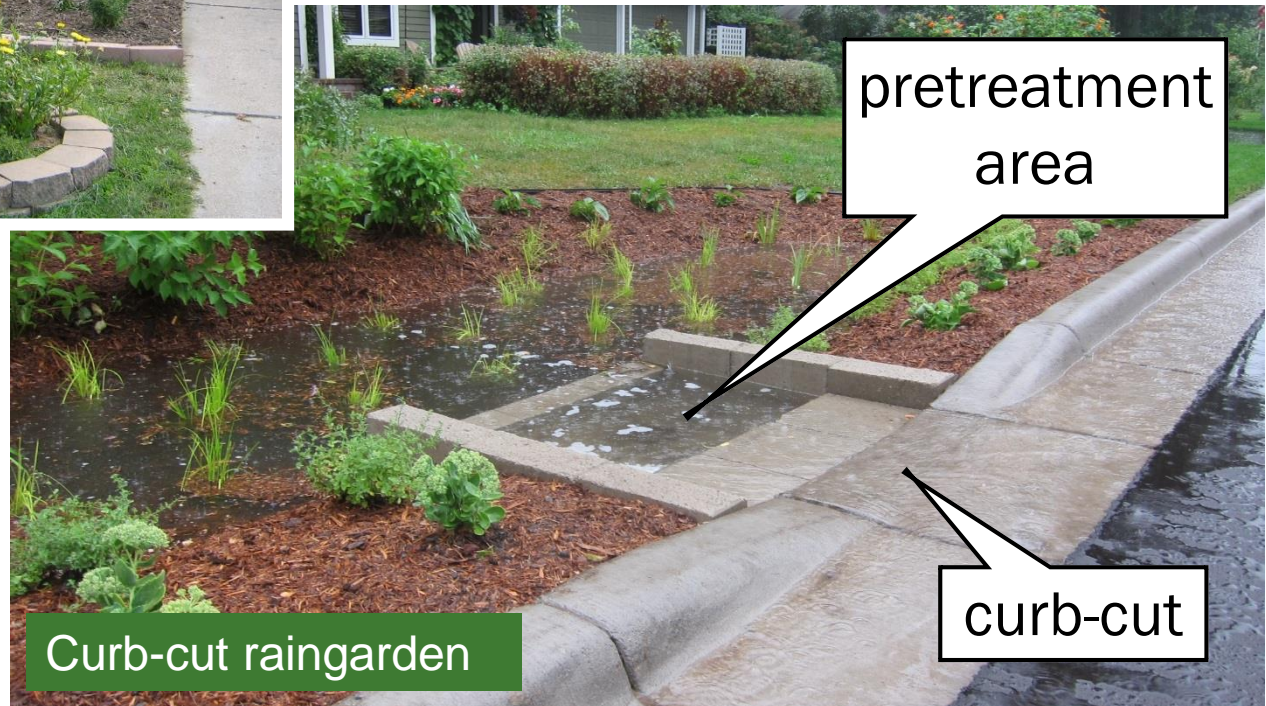
# How do raingardens work?



Non curb-cut raingarden



Typical cross section



Curb-cut raingarden

# Cost share information

## RWMWD will provide:

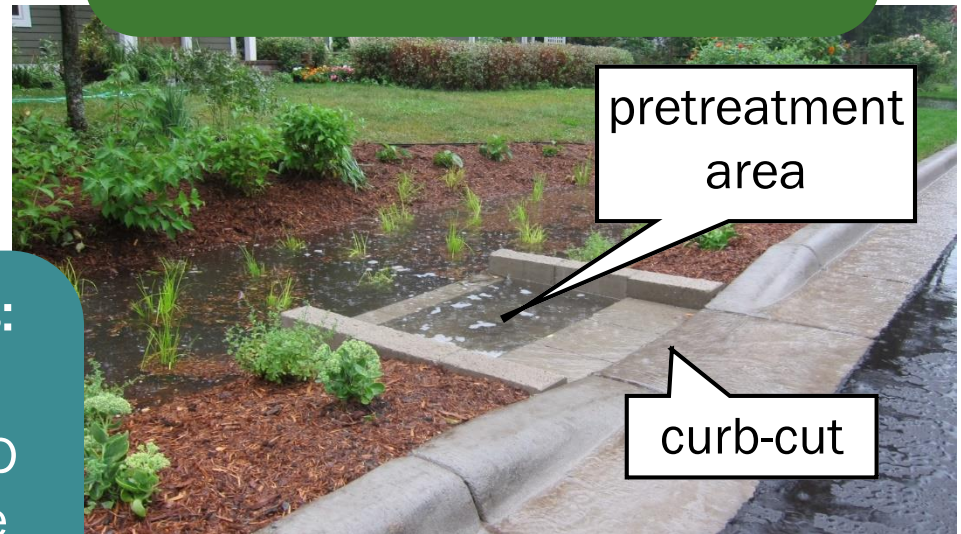
- 100% of the cost of materials and approved labor (*except for 5<sup>th</sup> and Dillon Area*)
- Site assessment and resources to help develop and complete the project.
- Guidance & monitoring following installation.

## Homeowner responsibilities:

- Sign a maintenance agreement with RWMWD agreeing to maintain the raingarden for a certain length of time.

## City will provide:

- A curb-cut as part of the mill and overlay project (\$600-\$700 value)





# Past projects



10th St. & Morehead Ave.



6th St. & Johnson Ave.

## Interested in a curb-cut raingarden?\*

Add your name and contact information to our interest list at the front table

-or-

contact:

Connie Taillon

Phone: 651-429-8587

Email:

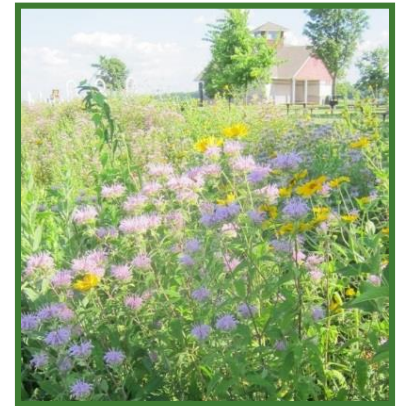
[ctaillon@whitebearlake.org](mailto:ctaillon@whitebearlake.org)

## Other cost share opportunities

### RWMWD Stewardship

### Grants Program (RWMWD.org)

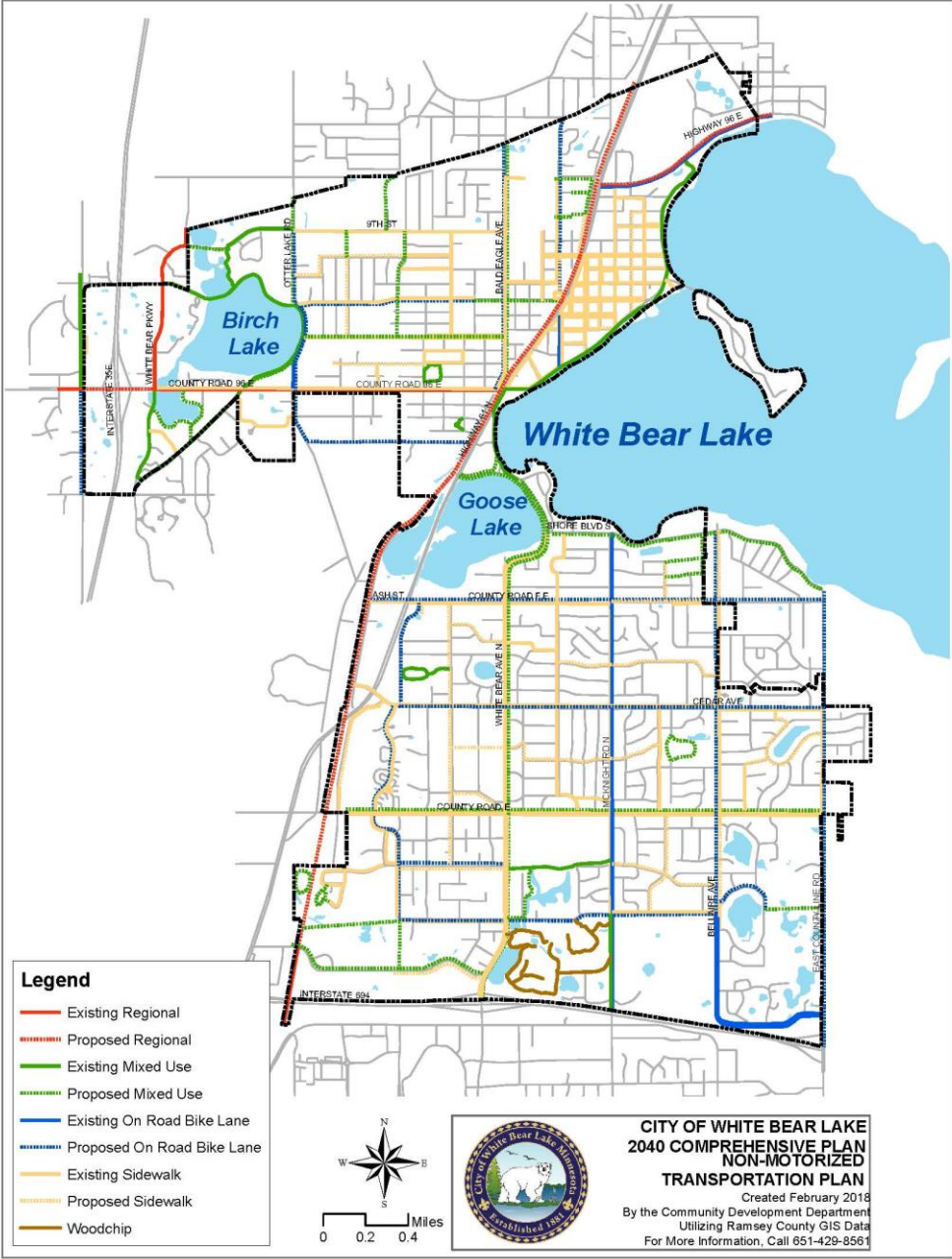
- Raingardens
- Native landscaping
- Shoreland restoration
- Pervious Pavement



*\*Not all sites are suitable for a curb cut raingarden. Sites are selected based on soil type and street drainage.*



# 2040 Comprehensive Plan



# 2020 Sidewalk Additions

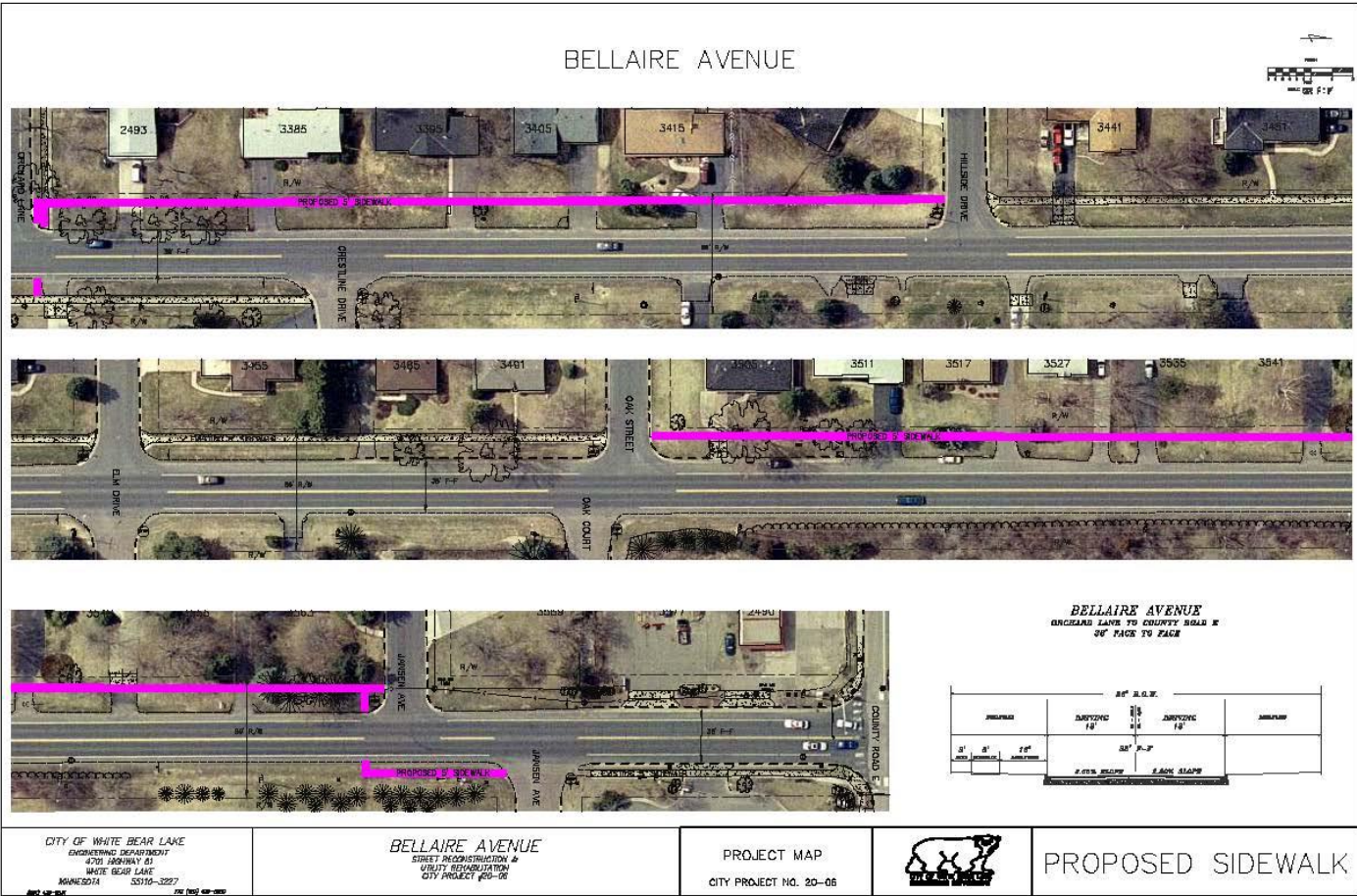




# 2020 Sidewalk Additions

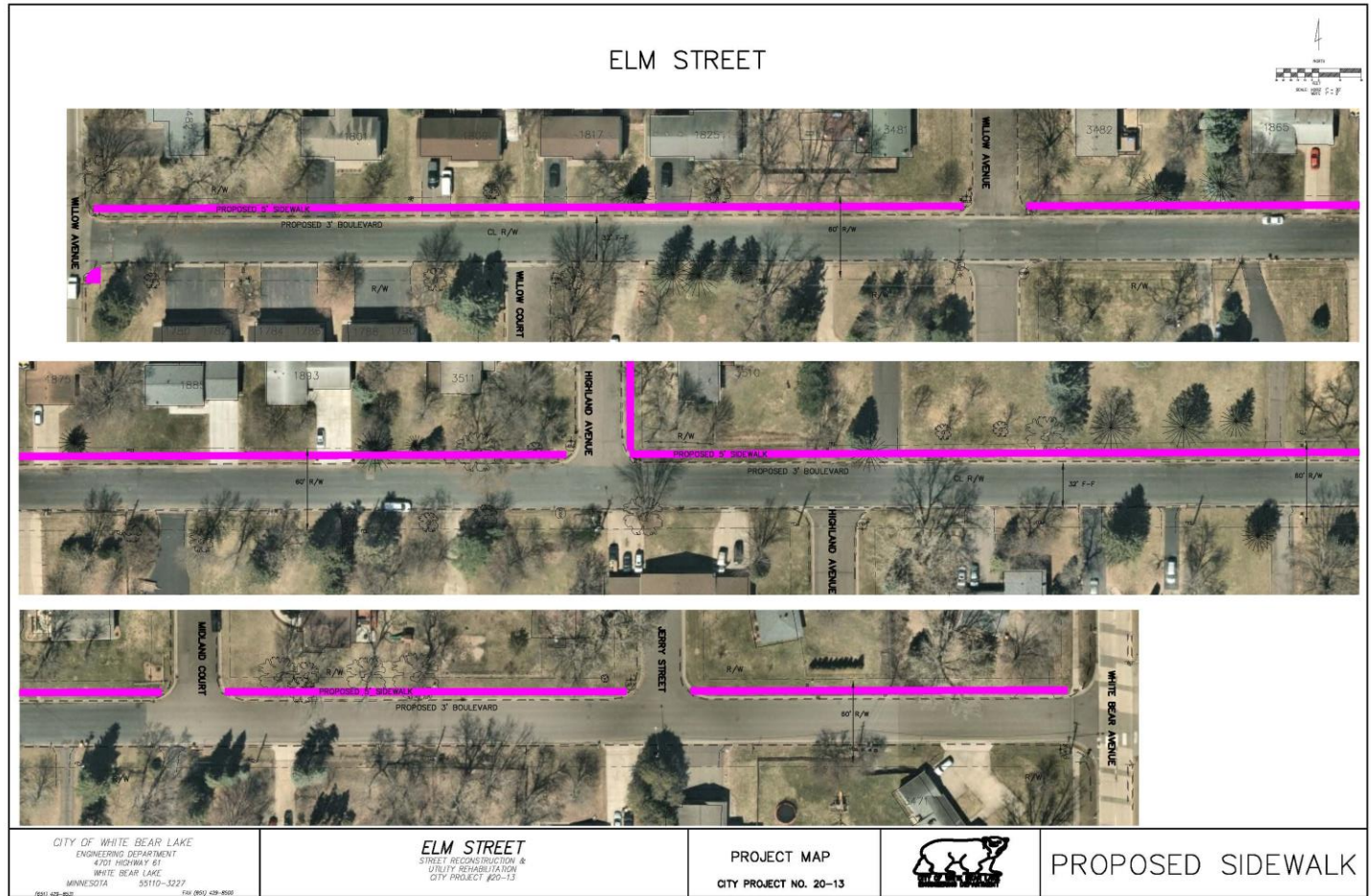


# BELLAIRE AVENUE





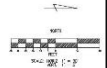
# ELM STREET



# HIGHLAND AVENUE



## HIGHLAND AVENUE



**HIGHLAND AVENUE**  
ELM STREET TO COUNTY ROAD E  
32' FACE TO FACE

60' R.O.W.			
WELLSHED	DRIVING 16'	DRIVING 16'	WELLSHED
32' F-F		3'	3'
2.5% SLOPE		2.5% SLOPE	



CITY OF WHITE BEAR LAKE  
ENGINEERING DEPARTMENT  
4701 HIGHWAY 63  
WHITE BEAR LAKE  
MINNESOTA 55110-3227

**HIGHLAND AVENUE**  
STREET RECONSTRUCTION &  
UTILITY RECONFIGURATION  
CITY PROJECT #20-13

PROJECT MAP  
CITY PROJECT NO. 20-13



PROPOSED SIDEWALK



# WHO TO CALL



City of White Bear Lake Engineering Department	(651) 429-8531
City of White Bear Lake Police Non-Emergency	(651) 429-8511
City of White Bear Lake Utility Billing Clerk	(651) 429-8565
Xcel Energy	(800) 895-2999
White Bear Lake Post Office	(651) 762-1437



# THANK YOU!



Thank you for taking the time to view this presentation. We hope it helps you to understand the process and what to expect during the entire pavement restoration project. We look forward to serving you in the 2020 construction season.



~ The White Bear Lake Engineering Department