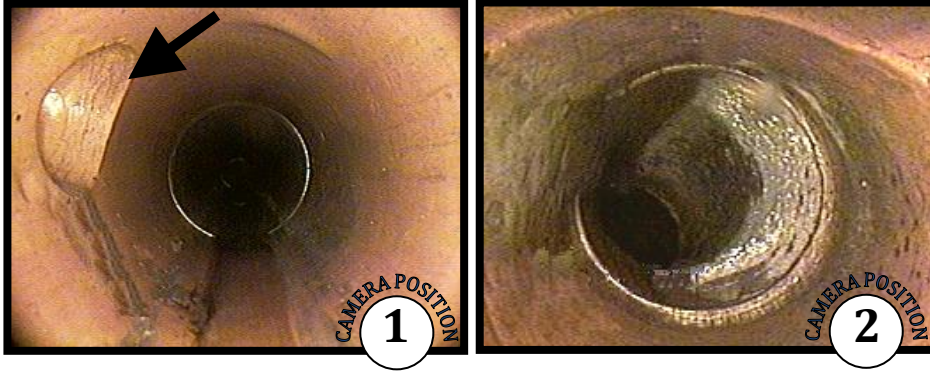
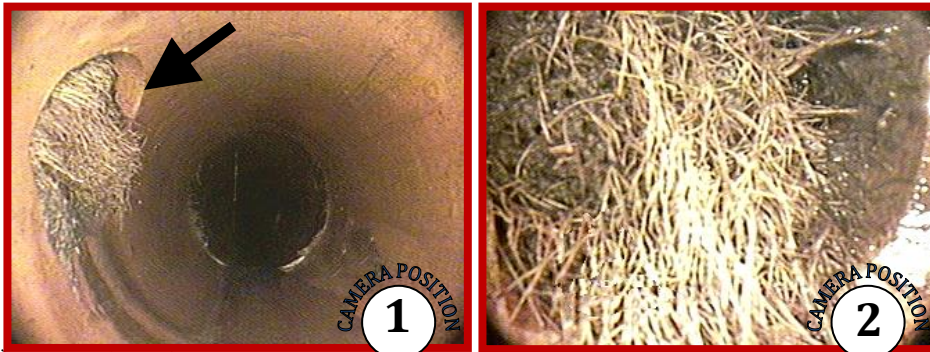


Sanitary Sewer Televising DIAGRAM

Service "A" None (ideal)



Service "B" Severe roots



**Where
does your
service
rate?**

The severity of roots in your sanitary service is described as either *none*, *light*, *moderate*, or *severe*. These conditions vary from connection to connection. In fact, these two services are located 100 feet apart on the same mainline. Also, having a tree in your front yard doesn't guarantee you will or will not have root damage.

