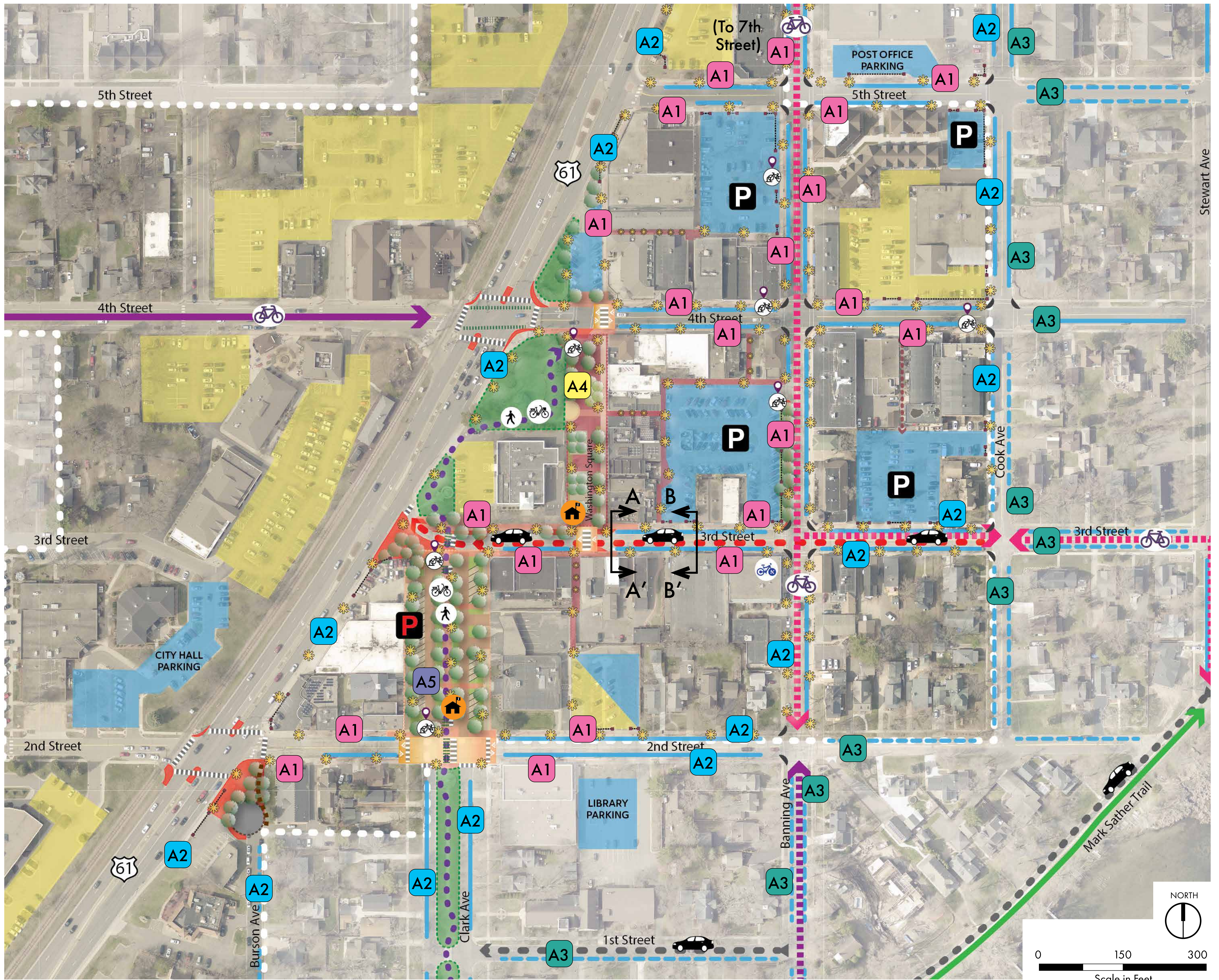


LEGEND

- | | | | | | | | |
|--|----------------------------------|--|--------------------------------------|--|--------------------------------------|--|--|
| | PROPOSED ONE-WAY STREET | | MUNICIPAL PARKING | | EXISTING BIKE ROUTE | | BIKE PARKING NODE/ FIX IT STATION |
| | EXISTING ONE-WAY STREET | | PRIVATE PARKING | | PROPOSED BIKE ROUTE | | ORNAMENTAL PEDESTRIAN-SCALE LIGHTING |
| | PROPOSED ROAD/ CURB CHANGES | | POTENTIAL SHARED PARKING | | POTENTIAL BIKE ROUTE | | ALLEYWAY PENDANT OR STRING LIGHTING |
| | PROPOSED TABLED CROSSWALK | | DESIGNATED PUBLIC PARKING | | PED/ BIKE "SLOW ROLL" PROMENADE | | COMMERCIAL BICYCLE SERVICE & EQUIPMENT |
| | POTENTIAL CURB BUMPOUT LOCATIONS | | LIMITED PUBLIC PARKING | | BIKE LANE CROSSING PAVEMENT MARKINGS | | EXISTING GREENSPACE |
| | CROSSWALK | | NEW TURN-AROUND/ CUL-DE-SAC | | PROPOSED SIDEWALK | | CONCEPTUAL TREE PLANTINGS |
| | MARKED PARALLEL PARKING | | NEW SIGNALIZED INTERSECTION | | PROPOSED ALLEYWAY IMPROVEMENTS | | EXISTING REGIONAL TRAIL |
| | UNMARKED PARALLEL PARKING | | REMOVE EXISTING PROGRAMMED LEFT TURN | | PARKING LOT SCREENING IMPROVEMENTS | | TRAIL ACCESS IMPROVEMENTS |
| | | | EVENT INFO BOOTH - SEASONAL | | | | |





LEGEND

- PROPOSED ONE-WAY STREET
- EXISTING ONE-WAY STREET
- PROPOSED ROAD/ CURB CHANGES
- PROPOSED TABLED CROSSWALK
- POTENTIAL CURB BUMPOUT LOCATIONS
- CROSSWALK
- MARKED PARALLEL PARKING
- UNMARKED PARALLEL PARKING
- MUNICIPAL PARKING
- PRIVATE PARKING
- POTENTIAL SHARED PARKING
- DESIGNATED PUBLIC PARKING
- LIMITED PUBLIC PARKING
- NEW TURN-AROUND/ CUL-DE-SAC
- EXISTING BIKE ROUTE
- PROPOSED BIKE ROUTE
- POTENTIAL BIKE ROUTE
- PED/ BIKE "SLOW ROLL" PROMENADE
- BIKE LANE CROSSING PAVEMENT MARKINGS
- PROPOSED SIDEWALK
- PROPOSED ALLEYWAY IMPROVEMENTS
- PARKING LOT SCREENING IMPROVEMENTS
- BIKE PARKING NODE/ FIX IT STATION
- ORNAMENTAL PEDESTRIAN-SCALE LIGHTING
- ALLEYWAY PENDANT OR STRING LIGHTING
- COMMERCIAL BICYCLE SERVICE & EQUIPMENT
- EXISTING GREENSPACE
- CONCEPTUAL TREE PLANTINGS
- EXISTING REGIONAL TRAIL
- TRAIL ACCESS IMPROVEMENTS
- EVENT INFO BOOTH - SEASONAL

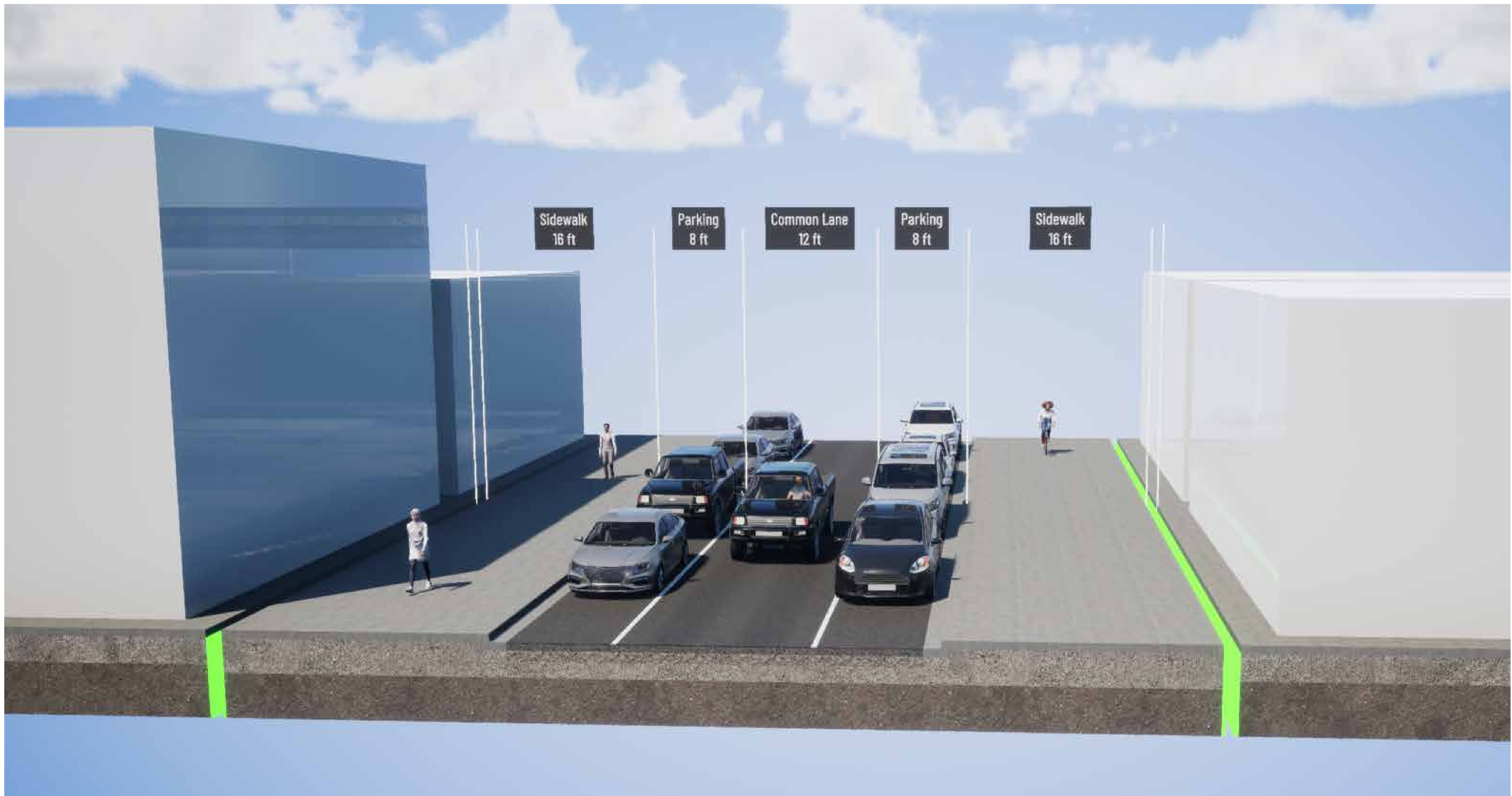


AMENITY ZONE KEY

- A1 CORE COMMERCIAL DISTRICT:**
 - ORNAMENTAL LIGHTING WITH BANNERS/ BASKETS
 - DECORATIVE PAVEMENTS
 - PARKING LOT SCREENING
 - SITE FURNISHINGS - BENCHES, WASTE RECEPTACLES
 - CURB BUMPOUTS (VARIABLE WIDTHS, SELECT LOCATIONS)
 - BICYCLE PARKING NODES
 - STREET TREE PLANTINGS (AS APPLICABLE)
 - HISTORICAL MARKERS/ INTERPRETIVE SIGNAGE
- A2 TRANSITION DISTRICT:**
 - ORNAMENTAL LIGHTING WITH BANNERS
 - DECORATIVE PAVEMENTS
 - PARKING LOT SCREENING
- A3 NEIGHBORHOOD DISTRICT:**
 - ORNAMENTAL LIGHTING (ONLY AT ENDS OF BLOCK)
 - PUBLIC STREET PARKING (SIGNED OR MARKED)
- A4 WASHINGTON SQUARE:** PEDESTRIAN ONLY, PROGRAMMED SPACE FOR EVENTS & ADDITIONAL TREE PLANTINGS, SPECIAL PAVEMENTS, ETC
- A5 CLARK AVENUE PLAZA:** PUBLIC PARKING (CLOSED FOR EVENTS), SPECIAL PAVEMENTS (WOONERF STYLE), TREE PLANTINGS, PEDESTRIAN & TRAIL CONNECTIONS



3rd STREET EXISTING CONDITIONS



3rd STREET PROPOSED ONE-WAY WITH PARALLEL PARKING: SECTION A-A'

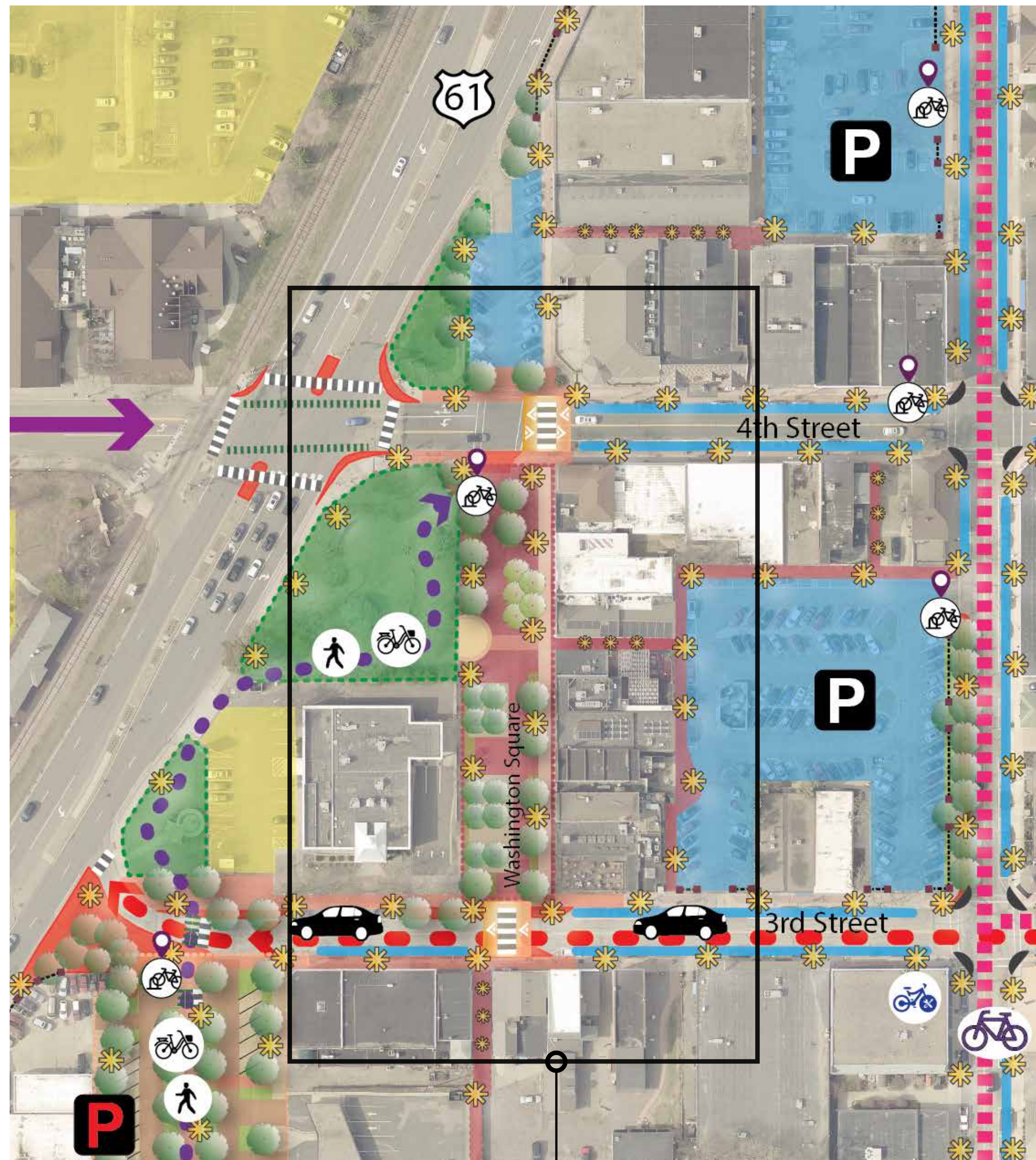


EXAMPLE IMAGES



WASHINGTON SQUARE

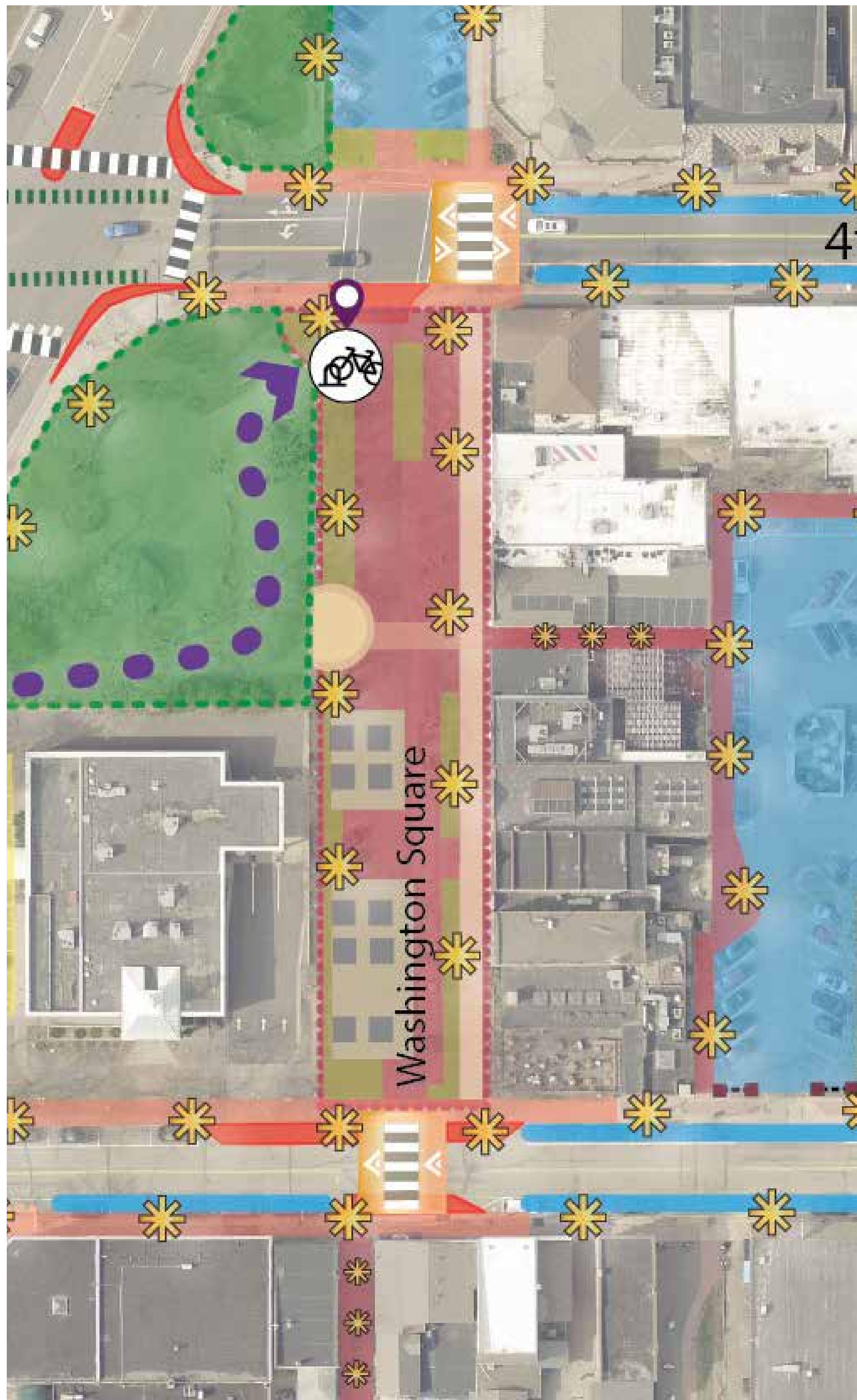
SCHEMATIC PLAN: PEDESTRIAN PLAZA



SEE ENLARGED VIEW

PROGRAMMING & AMENITIES

- PERMANENTLY CLOSED STREET TO VEHICULAR TRAFFIC, PEDESTRIAN ONLY
- IMPROVED SIDEWALK ACCESS TO BUSINESSES
- INFORMAL GATHERING & SMALL PERFORMANCE SPACE/ PLATFORM
- VARIETY OF SEATING OPTIONS:
 - ❖ CAFE TABLES & CHAIRS, BENCHES, SEATWALLS
- ADDITIONAL GREENSPACE & TREE PLANTINGS (TREE "GROVES" IN PLAZA)
- SPECIAL PAVEMENT OPTIONS:
 - ❖ BRICK PAVERS, COLORED CONCRETE, PERMEABLE PAVERS
- DECORATIVE LIGHTING, BANNERS, PLANTERS
- BIKE PARKING STATION
- EVENTS - LOCAL & SEASONAL:
 - ❖ MUSIC, MARKETS, ART SHOWS, ICE SCULPTURES
- GAS FIREPLACE (ENCLOSED) FOR YEAR-AROUND ACTIVITIES
- DESIGN, MATERIALS & SITE FURNISHINGS CORRESPONDING TO HISTORIC QUALITY & AESTHETICS OF THE DOWNTOWN CORE
- INFO BOOTH FOR EVENTS USED SEASONALLY
- HISTORICAL MARKERS/ PLAQUES & INTERPRETIVE SIGNAGE



ENLARGED VIEW (TREES TURNED OFF FOR CLARITY)



CHURCH STREET MARKETPLACE, BURLINGTON, VERMONT
(Photo credit www.Vermont.com)



MARKET STREET PLAZA, WHEELING, WEST VIRGINIA
(Photo credit www.weelunk.com)



RIVERFRONT PARK PLAZA, CHIPPEWA FALLS, WISCONSIN

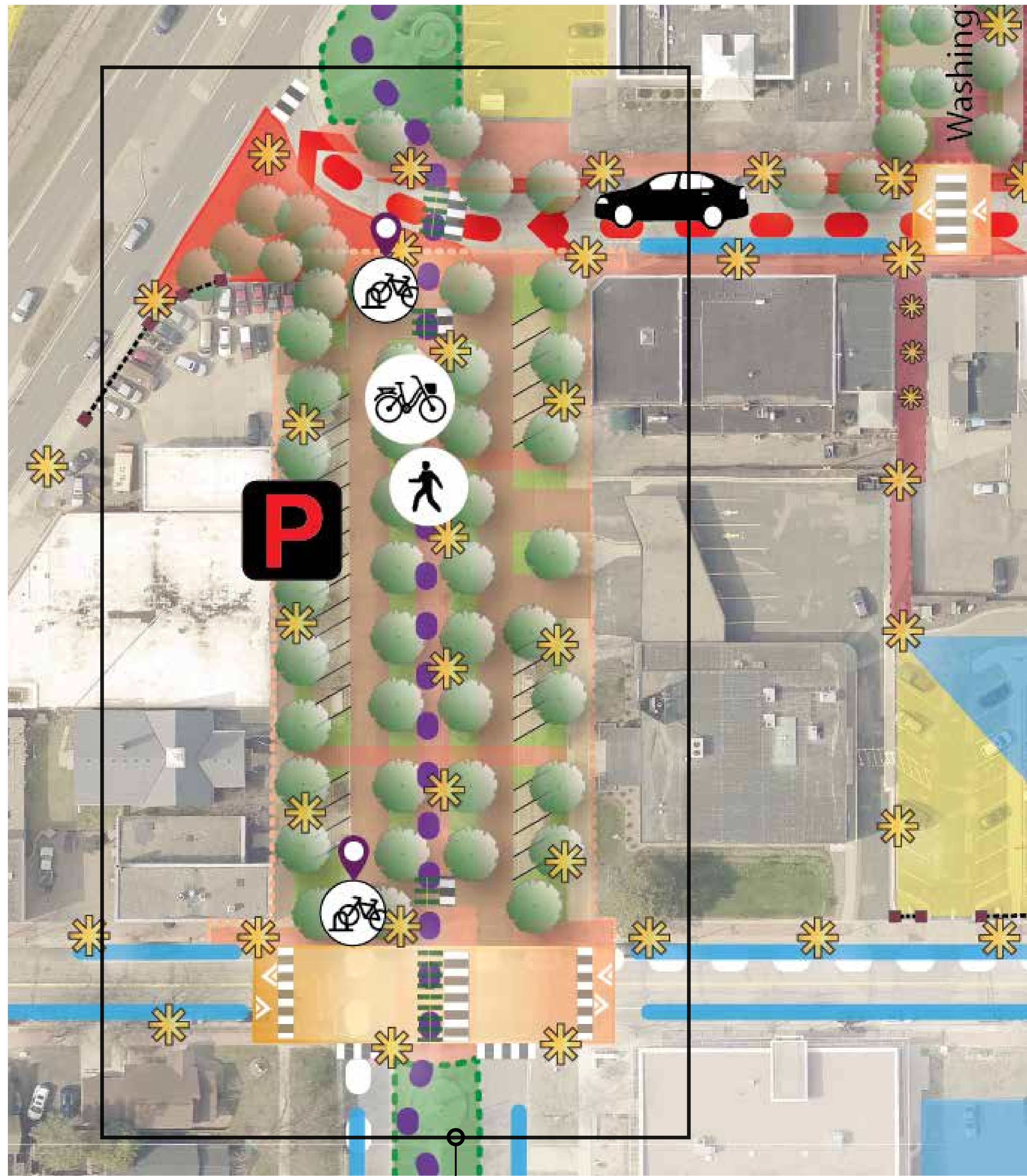


PEDESTRIAN PLAZA WITH TREES IN CU-STRUCTURAL SOILS (Photo credit www.openaccessgovernment.org)

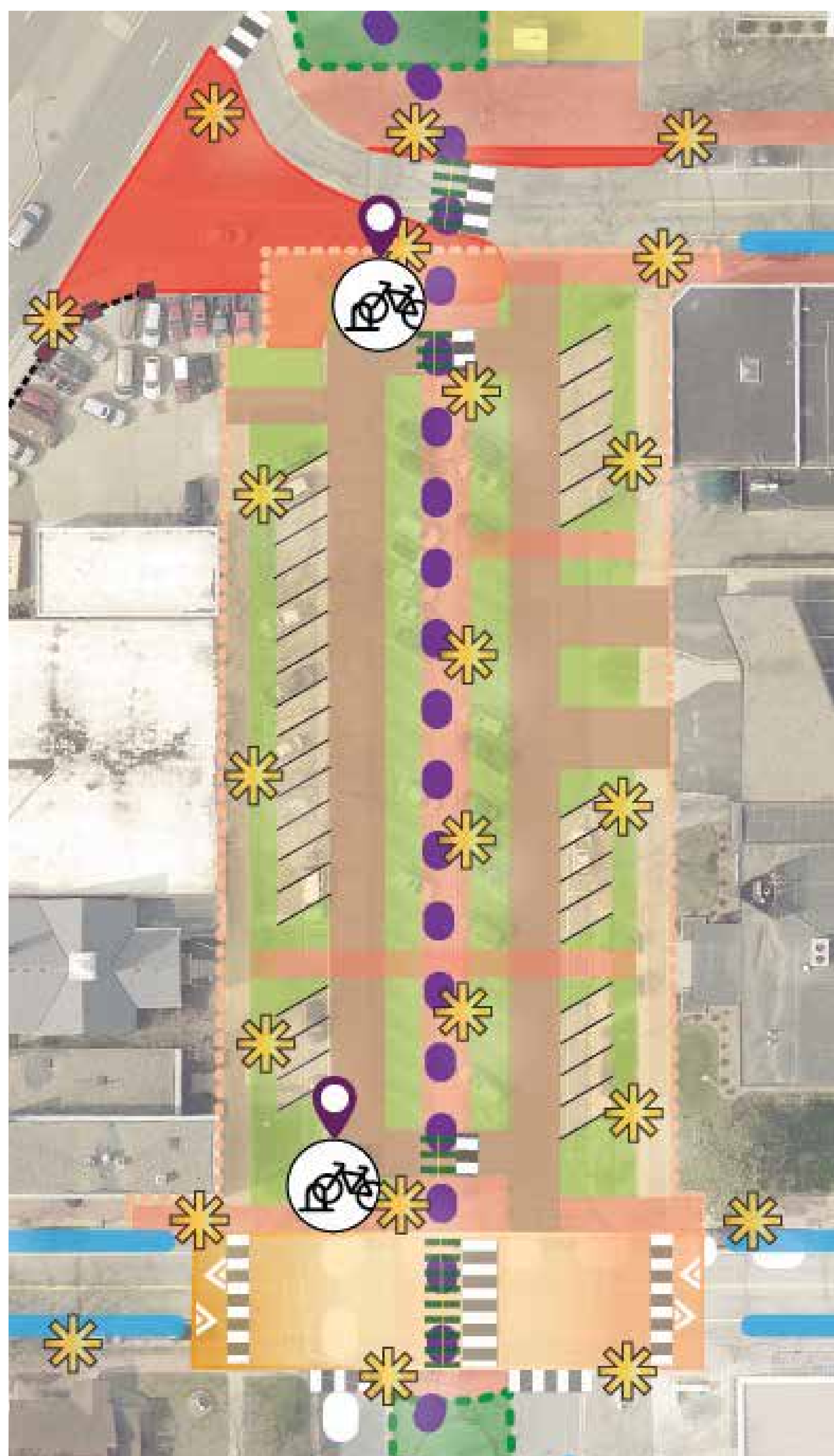


CLARK AVENUE PLAZA

SCHEMATIC PLAN:



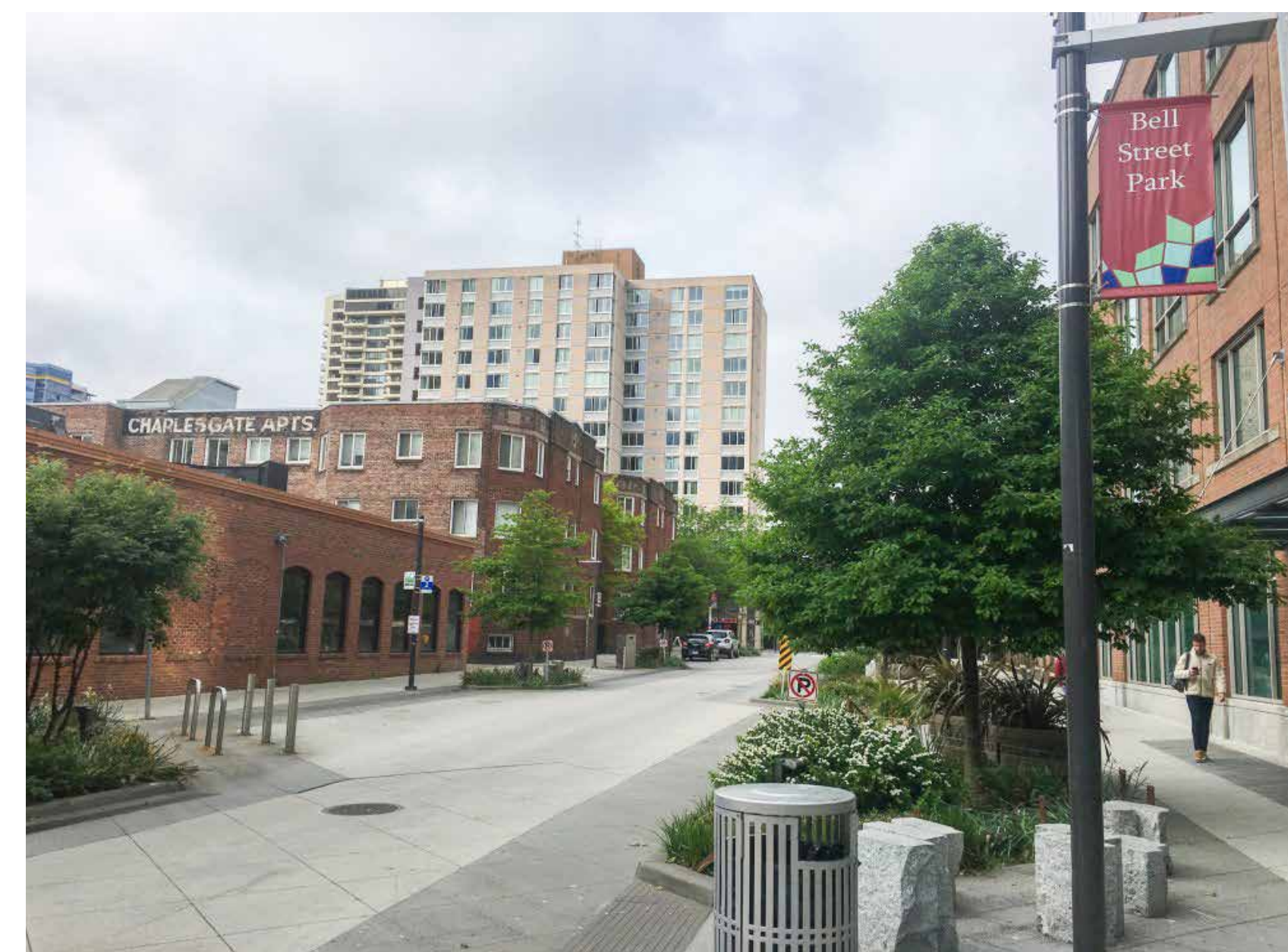
SEE ENLARGED VIEW



ENLARGED VIEW (TREES TURNED OFF FOR CLARITY)

PROGRAMMING & AMENITIES

- PUBLIC PARKING LOT & FLEXIBLE EVENT SPACE - CLOSED TO VEHICULAR TRAFFIC FOR EVENTS ONLY WITH SHARED STREET QUALITIES
- ANGLED PARKING ON OUTSIDE EDGES WITH ONE-WAY AISLES
- CENTER PEDESTRIAN AMENITY ZONE
- SPECIAL PAVEMENT OPTIONS:
 - ❖ BRICK PAVERS, COLORED CONCRETE, PERMEABLE PAVERS
 - ❖ DIFFERENT PAVEMENTS FOR DRIVE AISLE, PARKING & PED ZONES
- TREE PLANTINGS, ADDITIONAL GREENSPACE, CENTER BOULEVARD & "SLOW ROLL" TRAIL ROUTE
- DECORATIVE LIGHTING, BANNERS, PLANTERS
- BIKE PARKING STATIONS
- DESIGN, MATERIALS & SITE FURNISHINGS CORRESPONDING TO HISTORIC QUALITY & AESTHETICS OF THE DOWNTOWN CORE
- IMPROVED PEDESTRIAN CONNECTIONS TO NORTH (WASHINGTON SQUARE) AND THE CLARK AVE PROMENADE TO THE SOUTH.
- INFO BOOTH FOR EVENTS USED SEASONALLY
- HISTORICAL MARKERS/ PLAQUES & INTERPRETIVE SIGNAGE



BELL STREET PARK, SEATTLE, WASHINGTON
(Photo Credit www.en.wikipedia.org)



SAINT PAUL, MINNESOTA FARMERS' MARKET
(Photo Credit www.impark.com)



RIVER STREET, BATAVIA, ILLINOIS (Photo credit John Greenfield, www.chi.streetsblog.org)



MAPLEWOOD MALL, PHILADELPHIA, PENNSYLVANIA (Photo Credit City of Philadelphia)



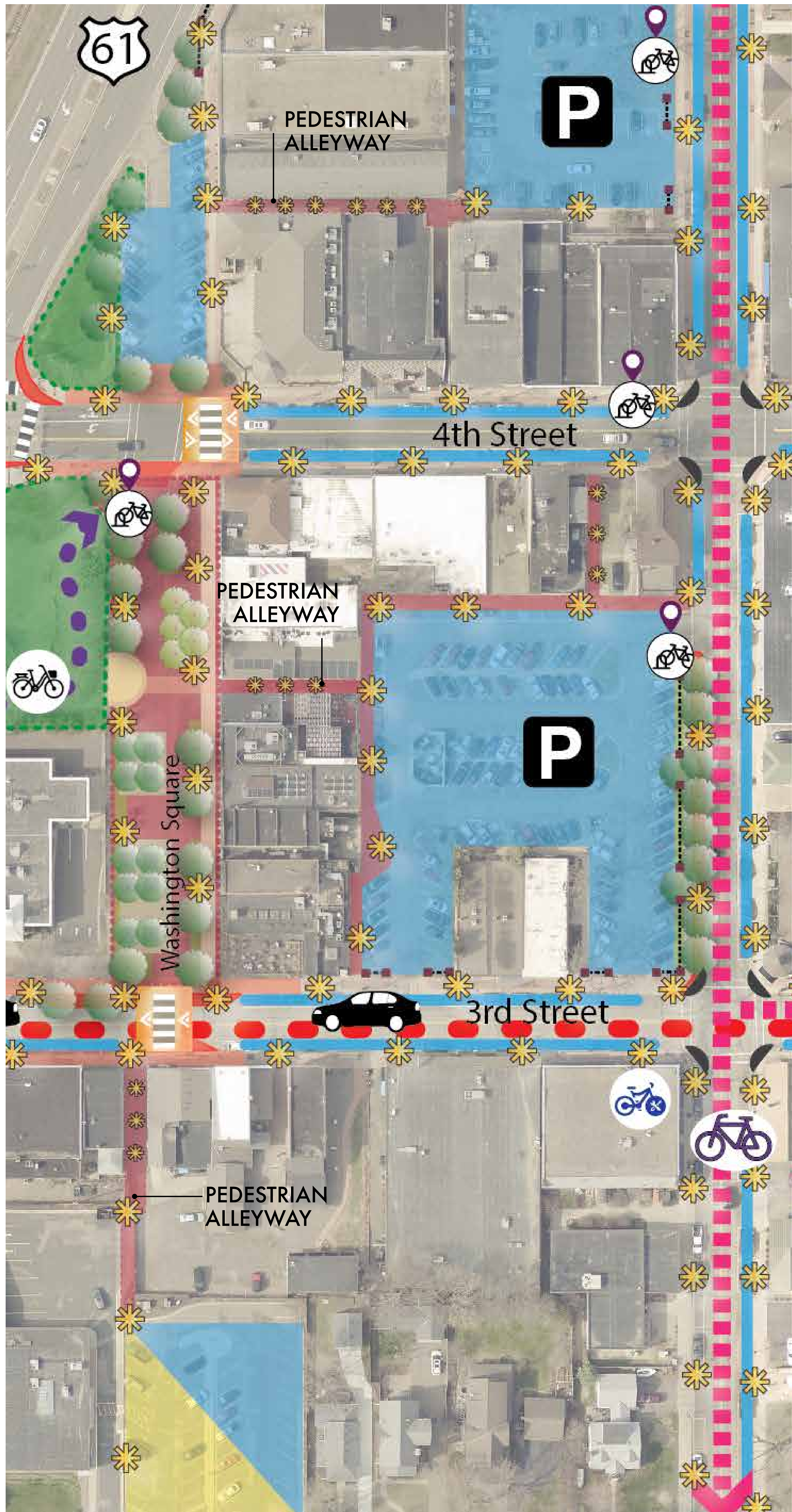
RIVER STREET, BATAVIA, ILLINOIS (Photo credit John Greenfield, www.chi.streetsblog.org)



MAPLEWOOD MALL, PHILADELPHIA, PENNSYLVANIA (Photo Credit www.phila.gov)



ALLEYWAY CONNECTIONS

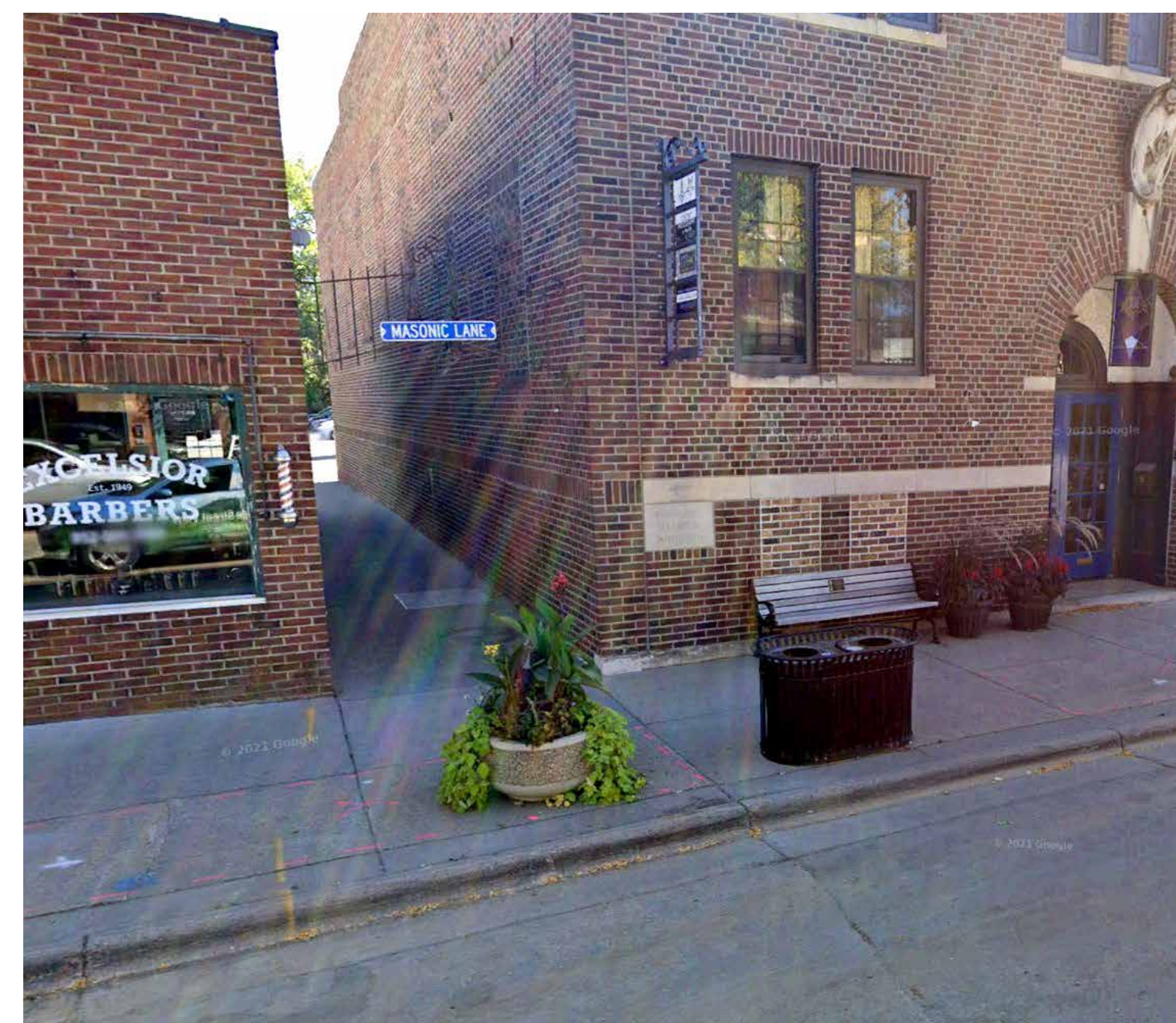


AMENITIES

- IMPROVEMENTS TO ALLEYWAY CONNECTIONS FROM PUBLIC PARKING AREAS TO COMMERCIAL ZONES & PUBLIC GATHERING AREAS
- SPECIAL PAVEMENT OPTIONS:
 - ❖ BRICK PAVERS & COLORED CONCRETE
- DECORATIVE LIGHTING:
 - ❖ PENDANT, STRING LIGHTS, SCONCES, BOLLARD LIGHTS
- SITE FURNISHINGS IF APPLICABLE - BENCHES, PLANTERS, BOLLARDS
- GATEWAY FEATURES & SIGNAGE
- OVERHEAD CANOPY - WITH TRANSLUCENT ACRYLIC PANELS
- ARTWORK - MURAL, DECORATIVE WALL PANELS
- DESIGN, MATERIALS & SITE FURNISHINGS CORRESPONDING TO HISTORIC QUALITY & AESTHETICS OF THE DOWNTOWN CORE



DAIRY BLOCK, DENVER, COLORADO (Photo credit www.ditescoservices.com)



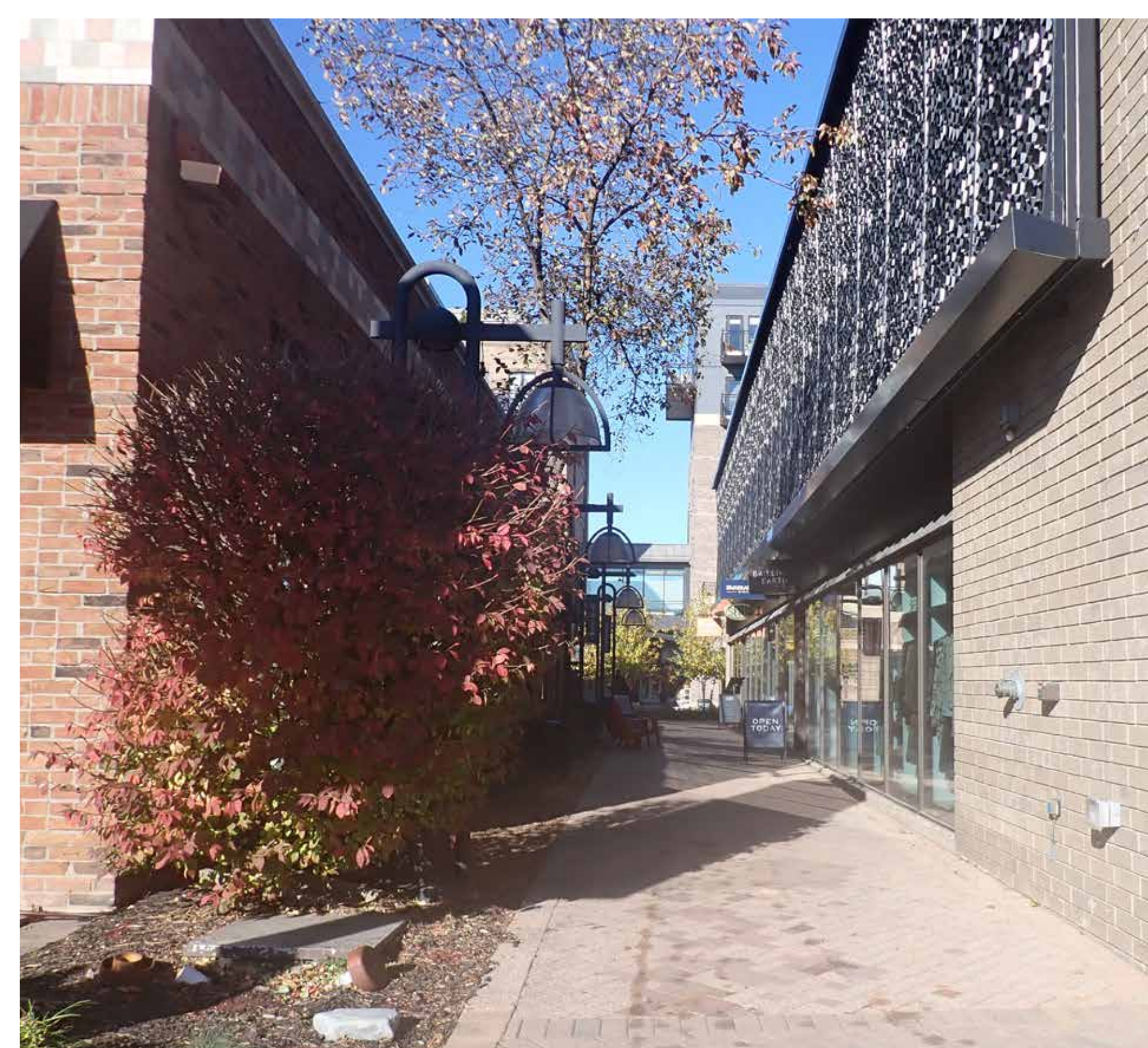
EXCELSIOR, MINNESOTA



NEW PRAGUE, MINNESOTA



50TH & FRANCE, EDINA, MINNESOTA



BUMPOUT CURBS & PEDESTRIAN/ BIKE CROSSING ZONES



NORTHFIELD, MINNESOTA



NORTHFIELD, MINNESOTA



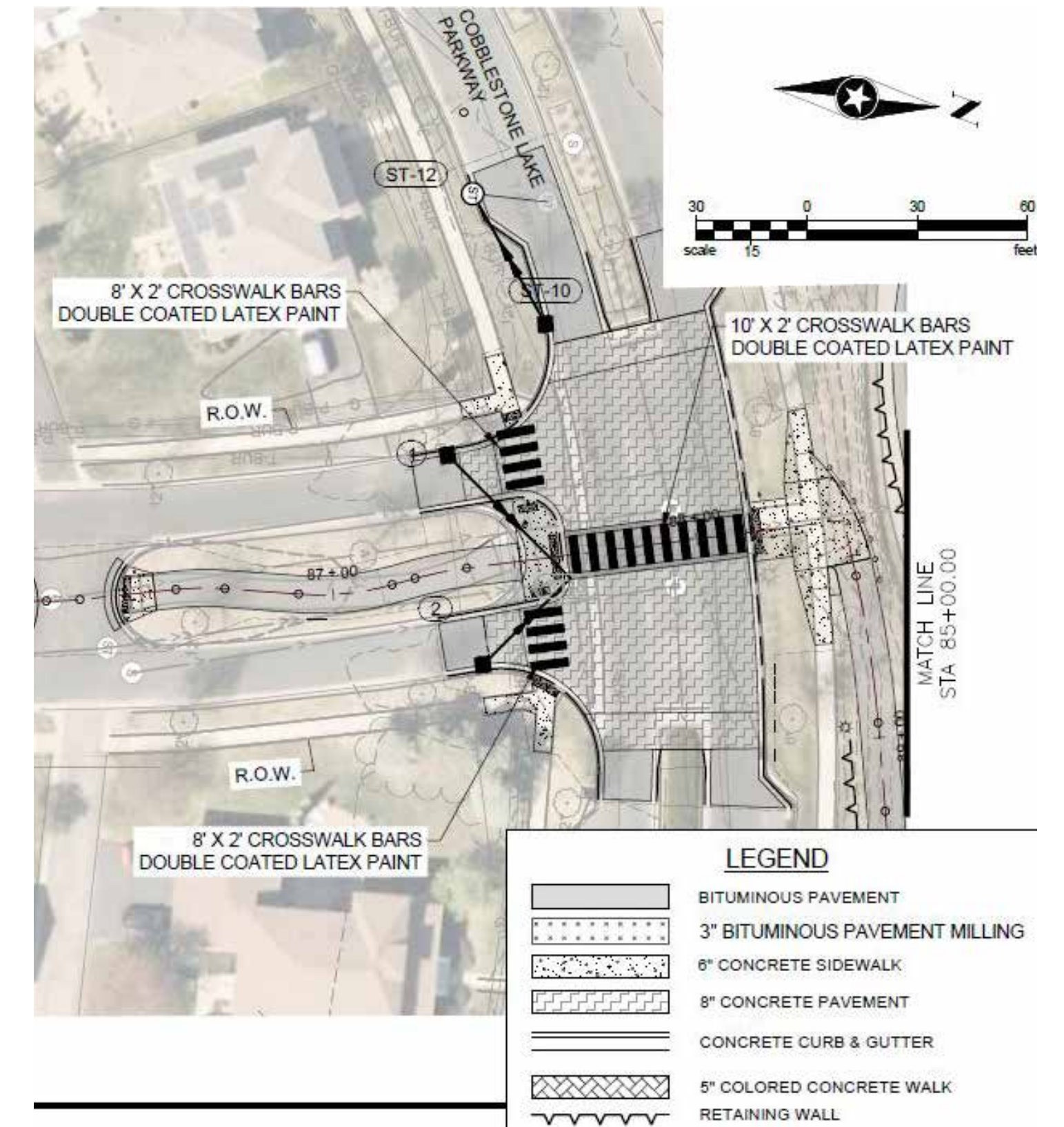
NORTHFIELD, MINNESOTA



NORTHFIELD, MINNESOTA



NEW PRAGUE, MINNESOTA



TABLED INTERSECTION, DAKOTA COUNTY NORTH CREEK GREENWAY TRAIL, APPLE VALLEY, MINNESOTA
(UNDER CONSTRUCTION 2023-2024)



WHELOCK PARKWAY, ST PAUL GRAND ROUND



TABLE CROSSING, LAKE HARRIET, MINNEAPOLIS

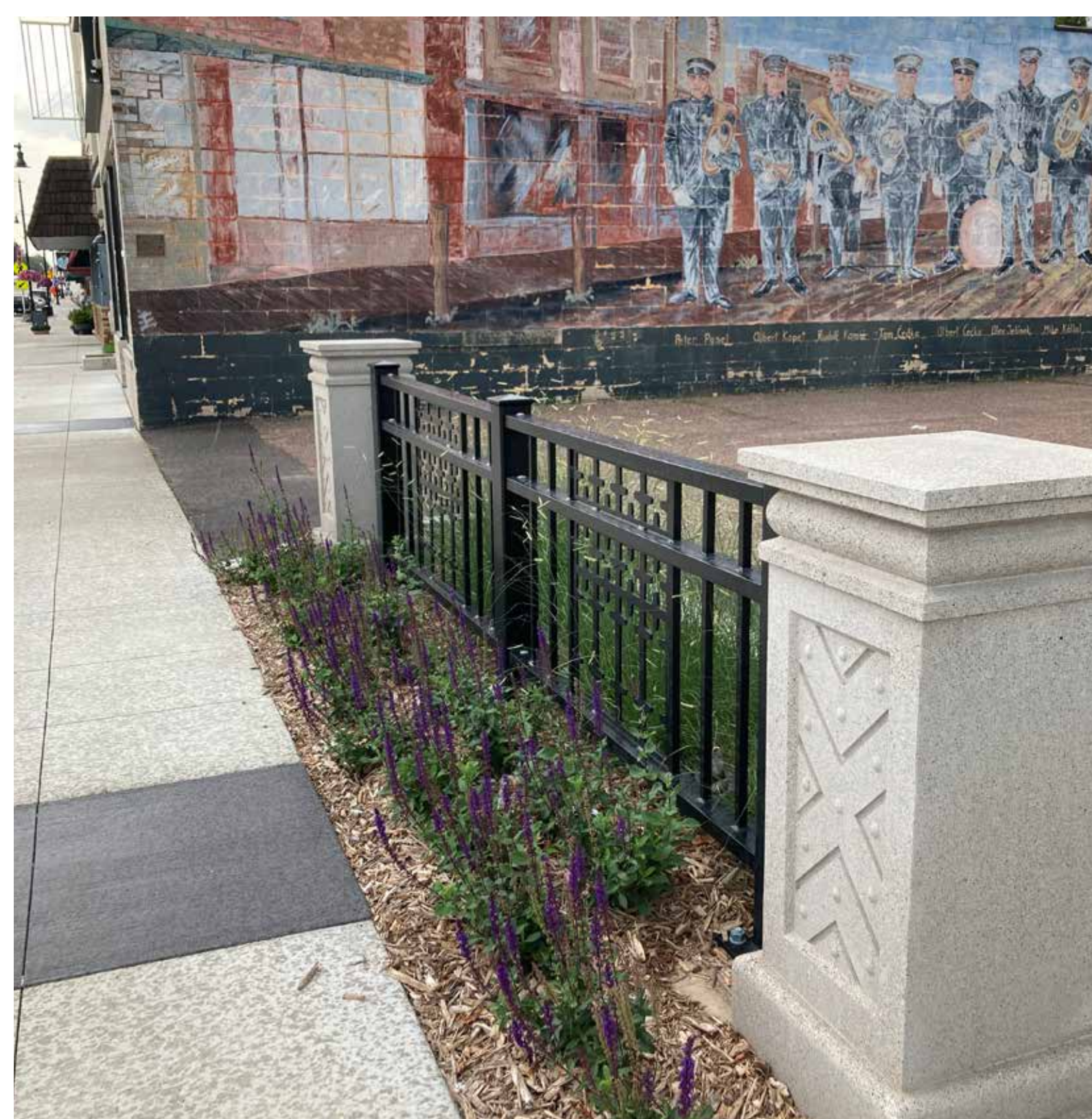


BIKE LANE CROSSING, BDE MAKA SKA, MINNEAPOLIS

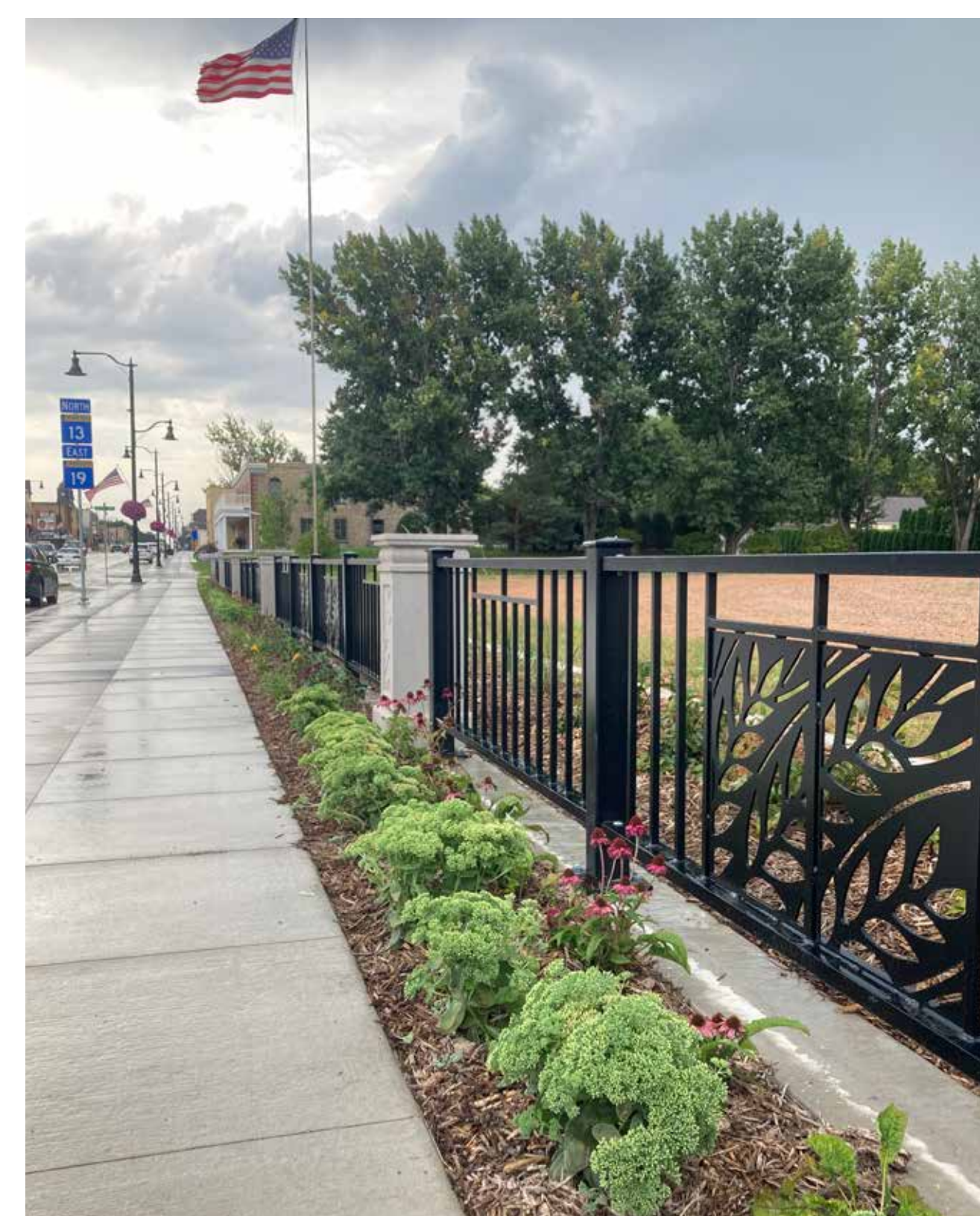
PARKING LOT SCREENING



NORTHFIELD, MINNESOTA



NEW PRAGUE, MINNESOTA



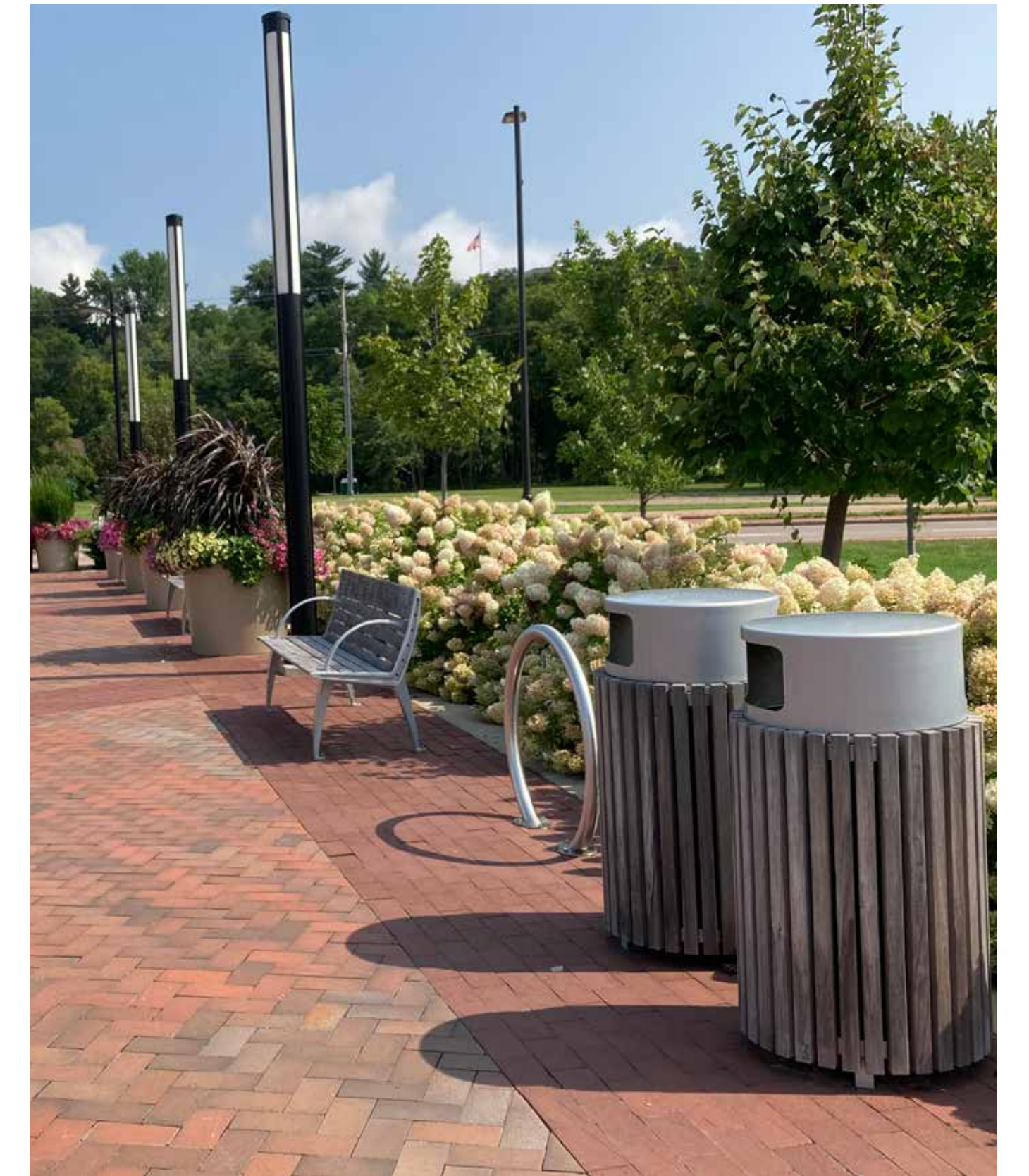
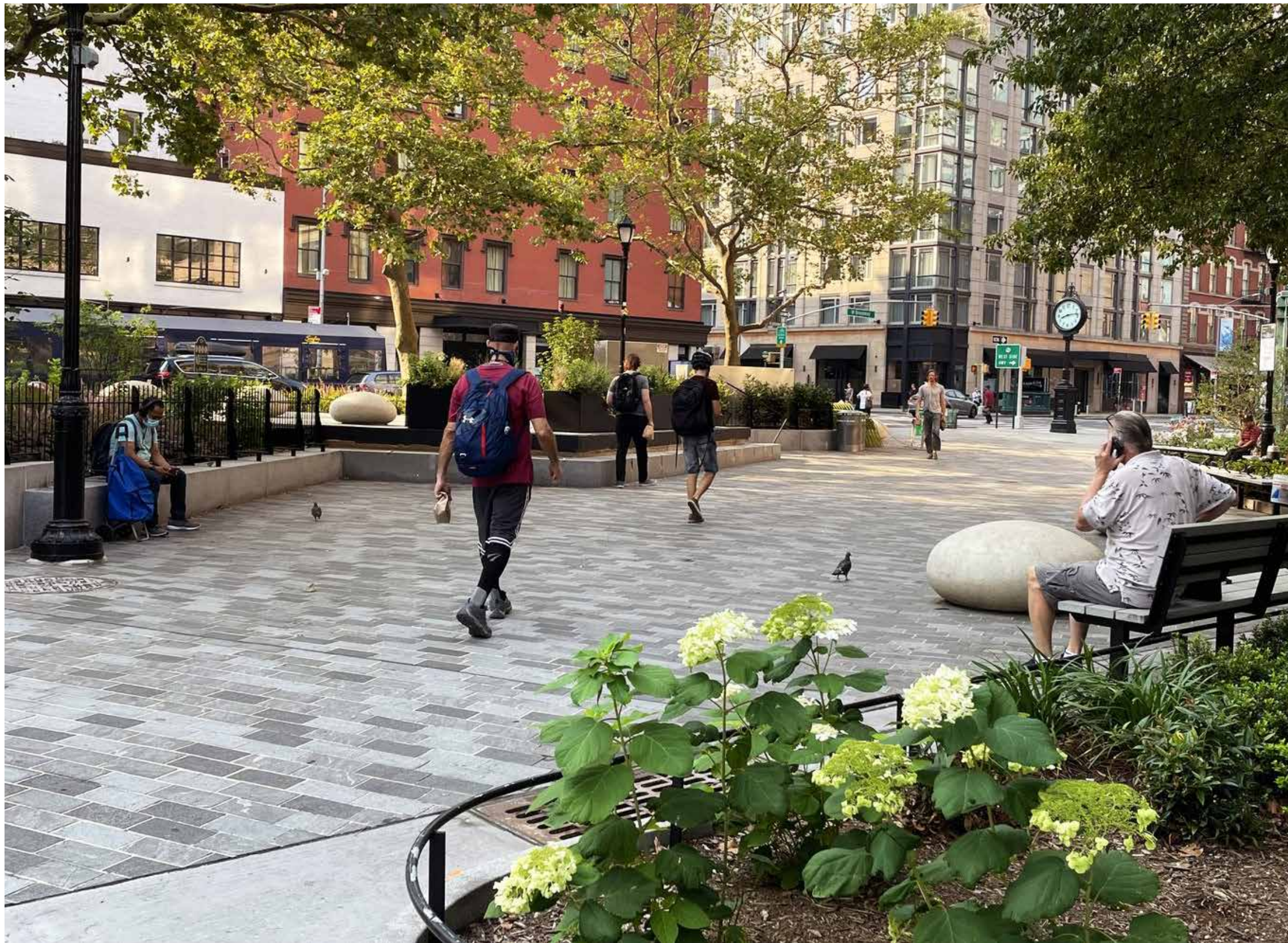
NEW PRAGUE, MINNESOTA



CRYSTAL, MINNESOTA



SITE FURNISHINGS & ELEMENTS



LIGHTING



PEDESTRIAN-SCALE CLASSIC STYLE (ACORN OR TEAR DROP) WITH CUT-OFF TOP FOR DARK SKY LIGHTING, LOWER COLOR TEMPERATURES FOR WARMER LED LIGHTING, AND CAPABILITY FOR ACCESSORIES OF HANGING BASKETS AND BANNERS

ROADWAY LEVEL LIGHTING WITH HANGING BASKETS

HISTORICAL MARKERS & WAYFINDING



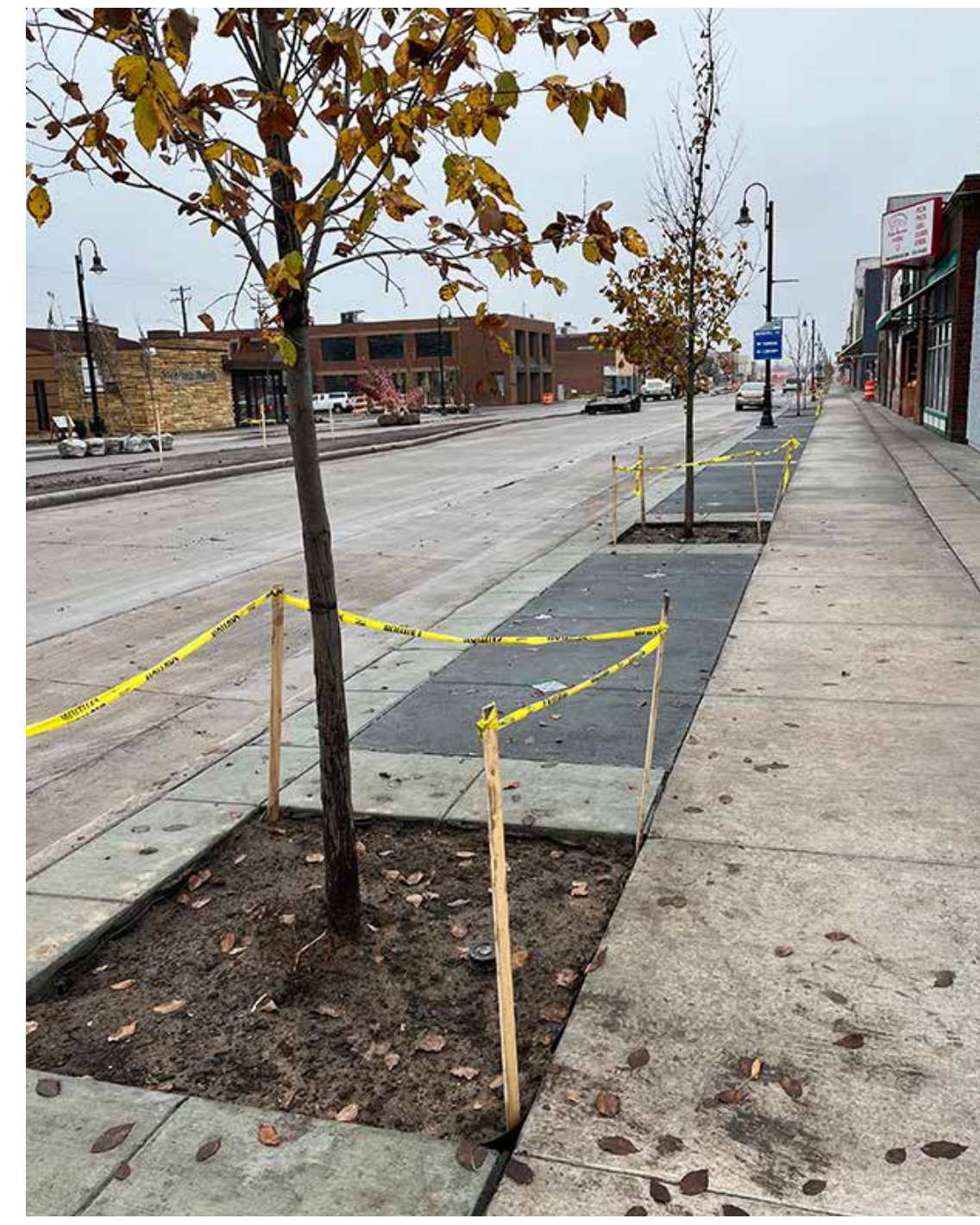
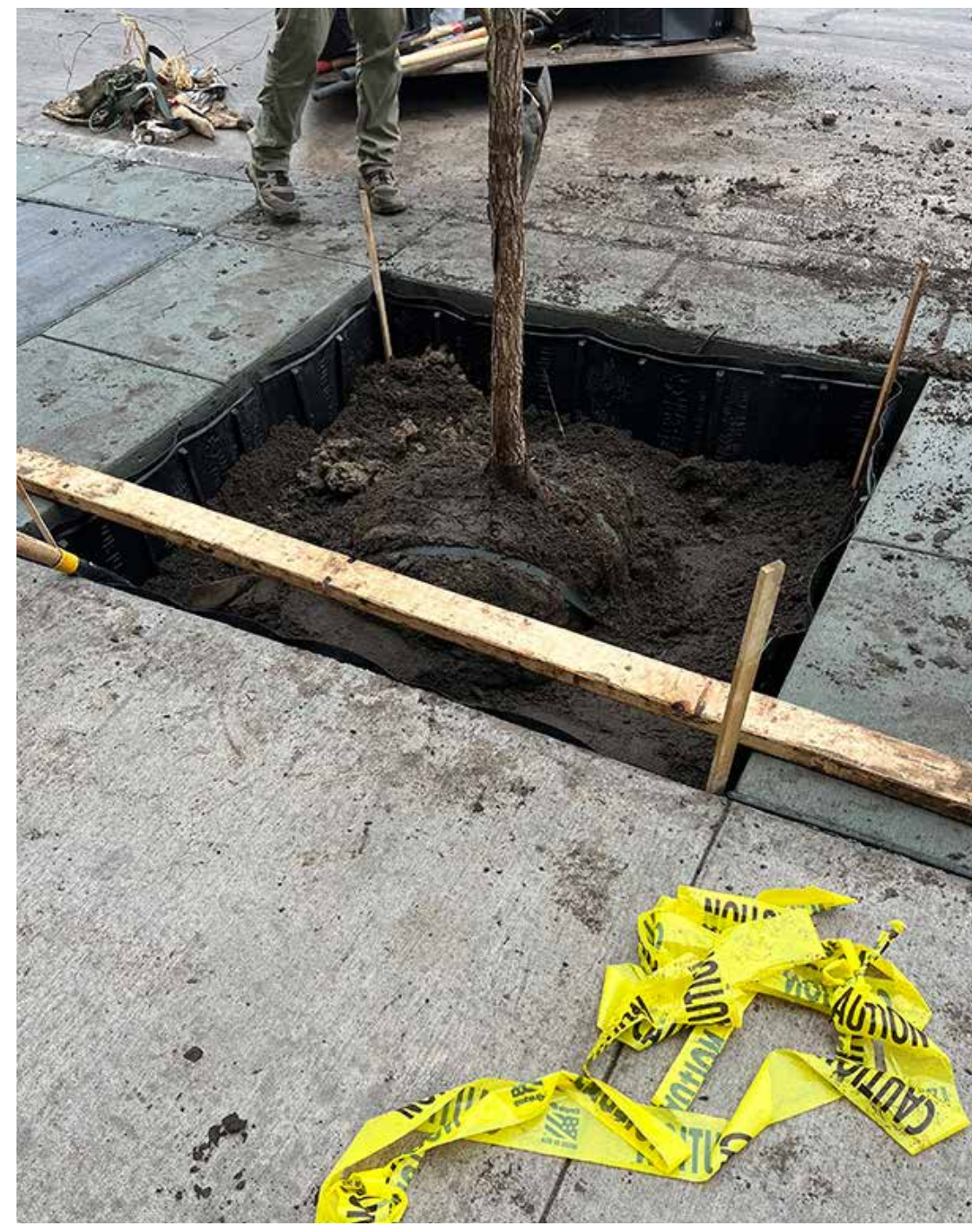
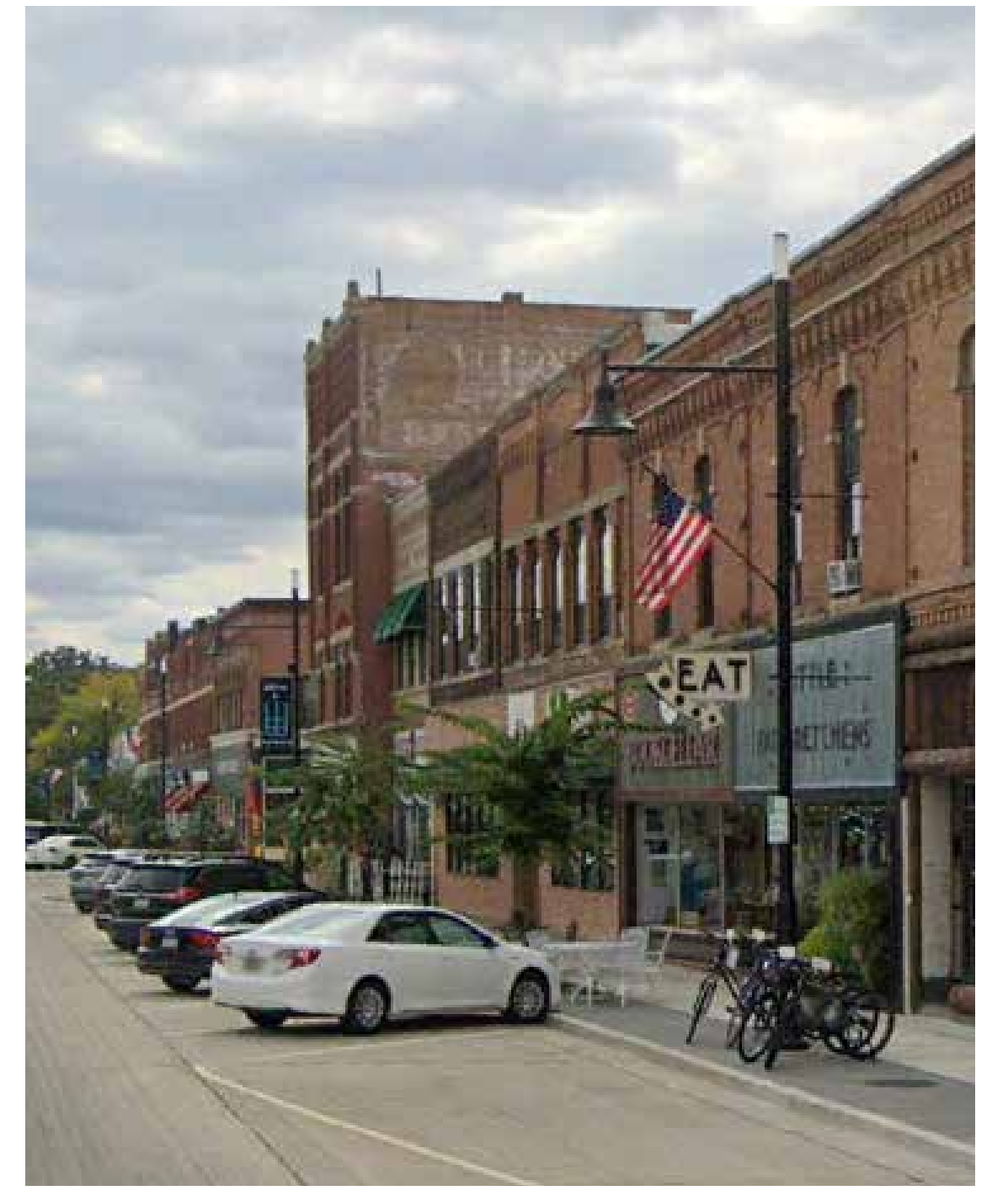
PLANTINGS: URBAN SETTING



GREENBLUE URBAN STREET TREES AND STORMWATER SOLUTIONS
(<https://greenblue.com>)



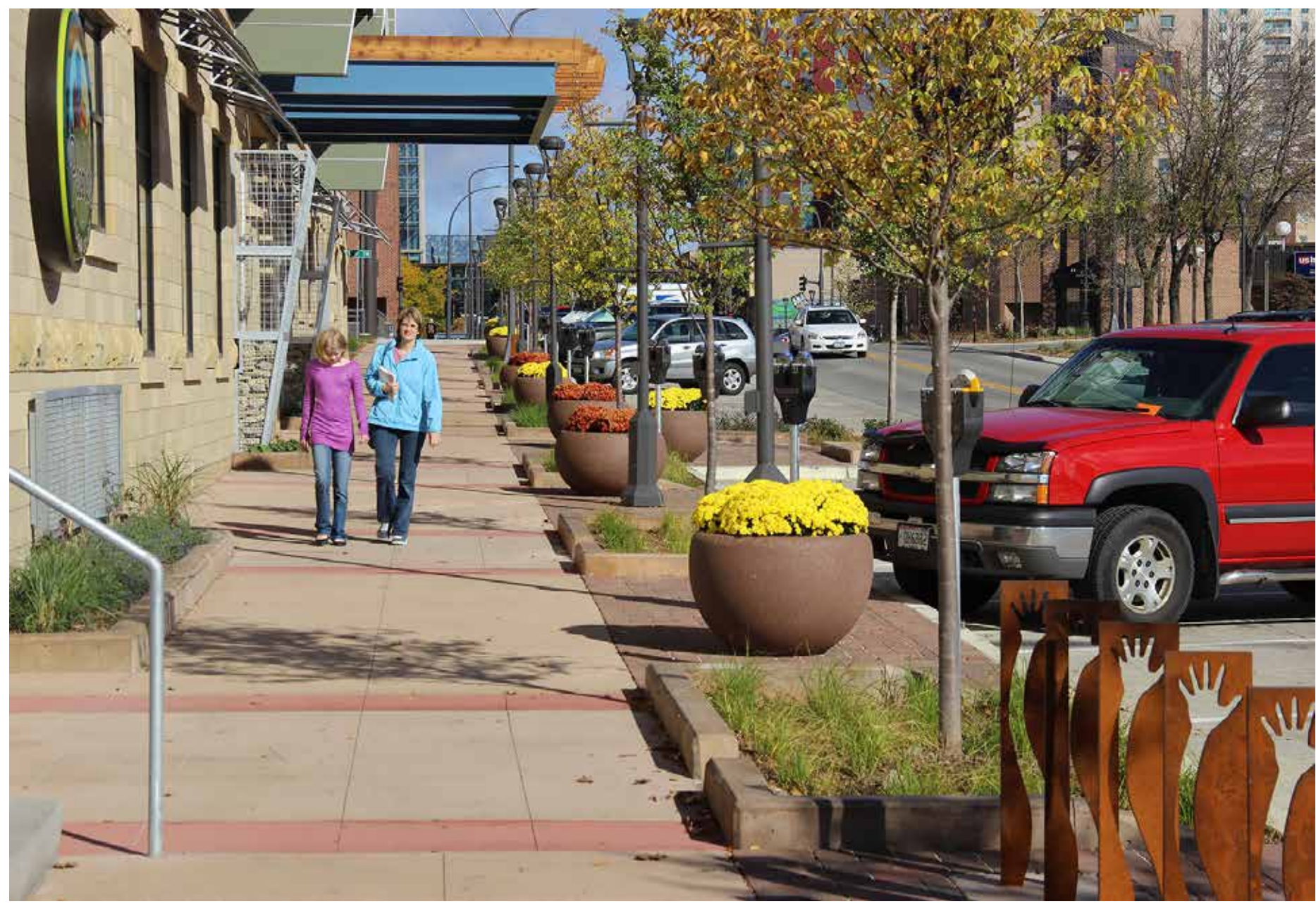
ARBORSYSTEM®, WAUPACA, WISCONSIN
(<https://greenblue.com/na/case-studies/city-of-waupaca-wi/>)



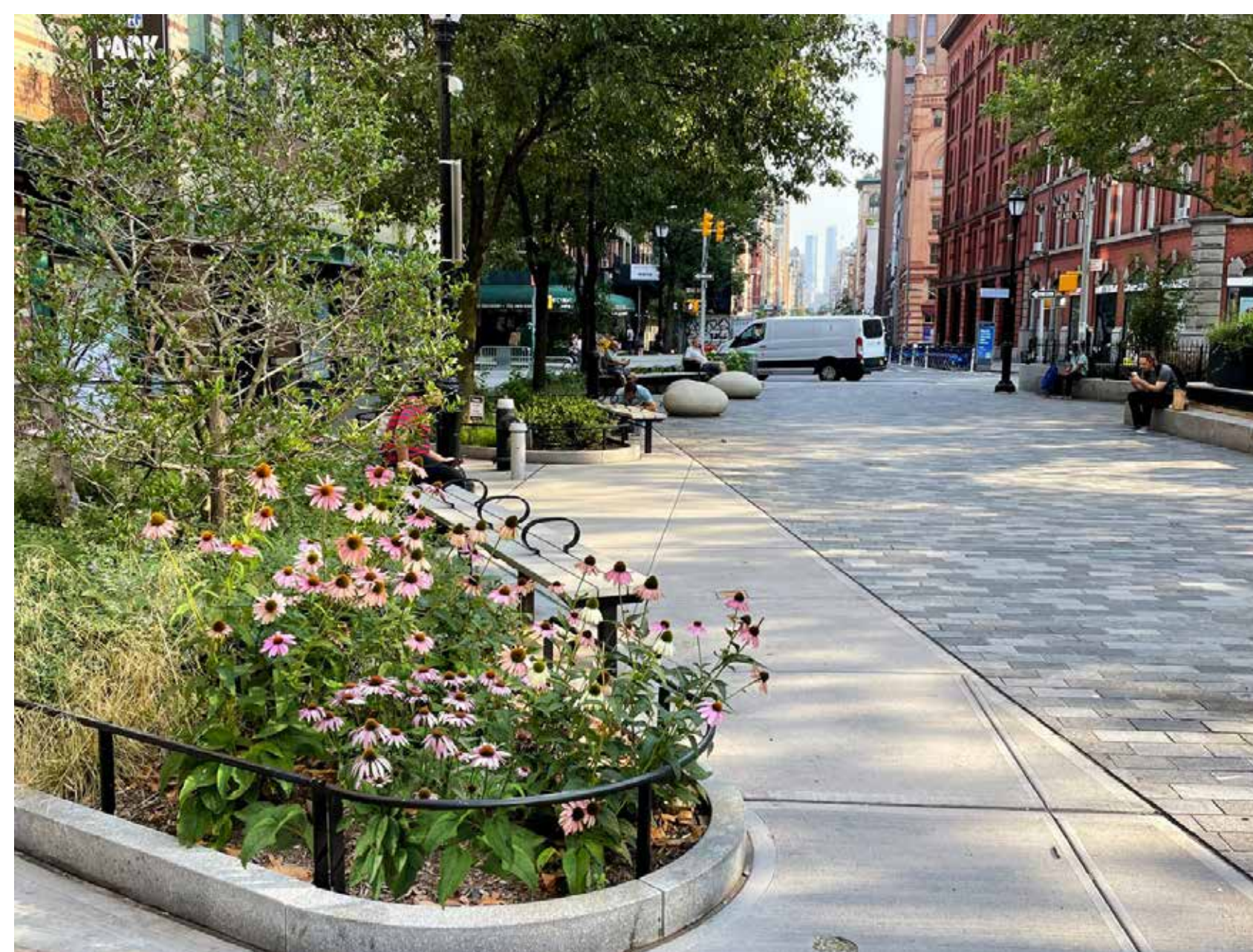
GREENBLUE URBAN ARBORSYSTEM®, RICE LAKE, WISCONSIN INSTALLATION 2023



PERMEABLE PAVERS AT STREET TREE PLANTINGS, LAKE ELMO, MINNESOTA



PERMEABLE PAVERS & STREET TREE PLANTINGS, 1ST AVE SW, ROCHESTER, MINNESOTA



INFORMATION KIOSKS



PREFABRICATED, PORTABLE INFO KIOSKS, VARIOUS STYLING OPTIONS AND CUSTOM DESIGN CAPABILITY

